



恒源筛管

HENGYUAN WATER WELL SCREEN

安平县恒源五金网业制品有限公司

Anping county Hengyuan Hardware Netting Industry Product Co.,LTD

中国 • 河北 • 安平
China • Hebei • Anping



企业的生命：来自品质
企业的延续：来自创新
企业的未来：来自管理

企业的理念：讲诚信、重科技、讲质量、服务至上
企业的目标：做中国最好的筛管、筛板

Life of the enterprise originates from quality

Continuity of the enterprise originates from innovation

Future of the enterprise originates from management

Concept of the enterprise: Being Honest,Focus on Technology,Quality First,Service Utmost

Target of the enterprise:Make best screen pipe and sieve plate in China



Enterprise honor

BUILDING REAL ESTATE CARRIER LEADER 荣誉评优



BRIEF INTRODUCTION

企业概况

安平县恒源五金网业制品有限公司，主要生产经营：约翰逊网、绕焊不锈钢筛管、镀锌滤水管、楔形丝筛管、过滤管、筛板、弧形筛、水帽、不锈钢网、网片、等。本公司生产的V型绕丝全焊式产品具有品种多、规格齐、服务优、执行SY5182-87（中华人民共和国石油部标准）。产品材质精选不锈钢304、304L、316、316L、哈氏合金等，具有结构牢固、抗拉抗压等特点，同时具有高强度和耐腐蚀的良好性能，并能在高温条件下工作。

公司产品广泛应用于电力油井、天然气井、水井、化工、矿山、造纸、环保、冶金、食品、装饰等行业水处理方面的过滤工程。产品畅销全国各地，并远销非洲、中东及东南亚地区。

Anping County Hengyuan Hardware Netting Industry Product CO., LTD. produce and sell as following: Johnson screen, Wire wrapped stainless steel screen pipe, Low carbon galvanized water well screen, Well screen, Wound screen, Wedge wire screen pipe, Ribbed screen, Screen tube, Strainer pipe, Rod based continuous slot screen pipe, Sieve plate, Screen cylinders, Vibrating sieve screen plate, Flat wedge wire panel, Water filter, Arc screen, Screen nozzle, Stainless steel wire mesh, Welded wire mesh, Wire mesh panel and so on. The V shaped full welded screen pipe have many varieties, specification, excellent service, execute SY5182-87 (Oil ministry of the people's Republic of China). Product material 304, 304L, 316, 316L, Hastelloy and so on. It has the characteristics of firm structure, tensile, collapse at the same time, has the good performance of high strength and corrosion resistance, and can work under high temperature conditions.

Our company products are widely used in power oil Wells, gas Wells, Water wells, chemical, mining, paper making, environmental protection, metallurgy, food, decoration and other industries of water treatment filter project. The products sell well all over the country, and exported to Africa, the Middle East and southeast Asia.

产品目录

PRODUCT CATALOGUE



P1.产品目录

PRODUCT CATALOGUE

P2.不锈纲梯形绕丝/Vee型丝/三角丝

STAINLESS STEEL VEE SHAPED WIRE/WRAP WIRE

P3-P4.约翰逊网/矿筛网

JOHNSON SCREEN

P5-P6.水泵过滤管/绕丝过滤管/滤水管

WATER WELL SCREEN/ROD BASED WIRE WRAPPED SCREEN

P7-P8.楔形丝筛管/梯形丝筛网/滤元

WEDGE WIRE SCREEN PIPE

P9.反冲洗筛管/内过滤筛管

REVERSE WEDGE WIRE SCREEN

P10.水帽/喷嘴

SCREEN NOZZLE/WATER AND GAS STRAINER

P11.筛片/筛板

SIEVE PLATE/SLOT MESH

P12.弧形筛

ARC SCREEN

P13.中排/进水装置

HEADER AND HUB LATERALS&HUB RADIAL LATERALS

P14.深井防砂筛管/带中心管筛管

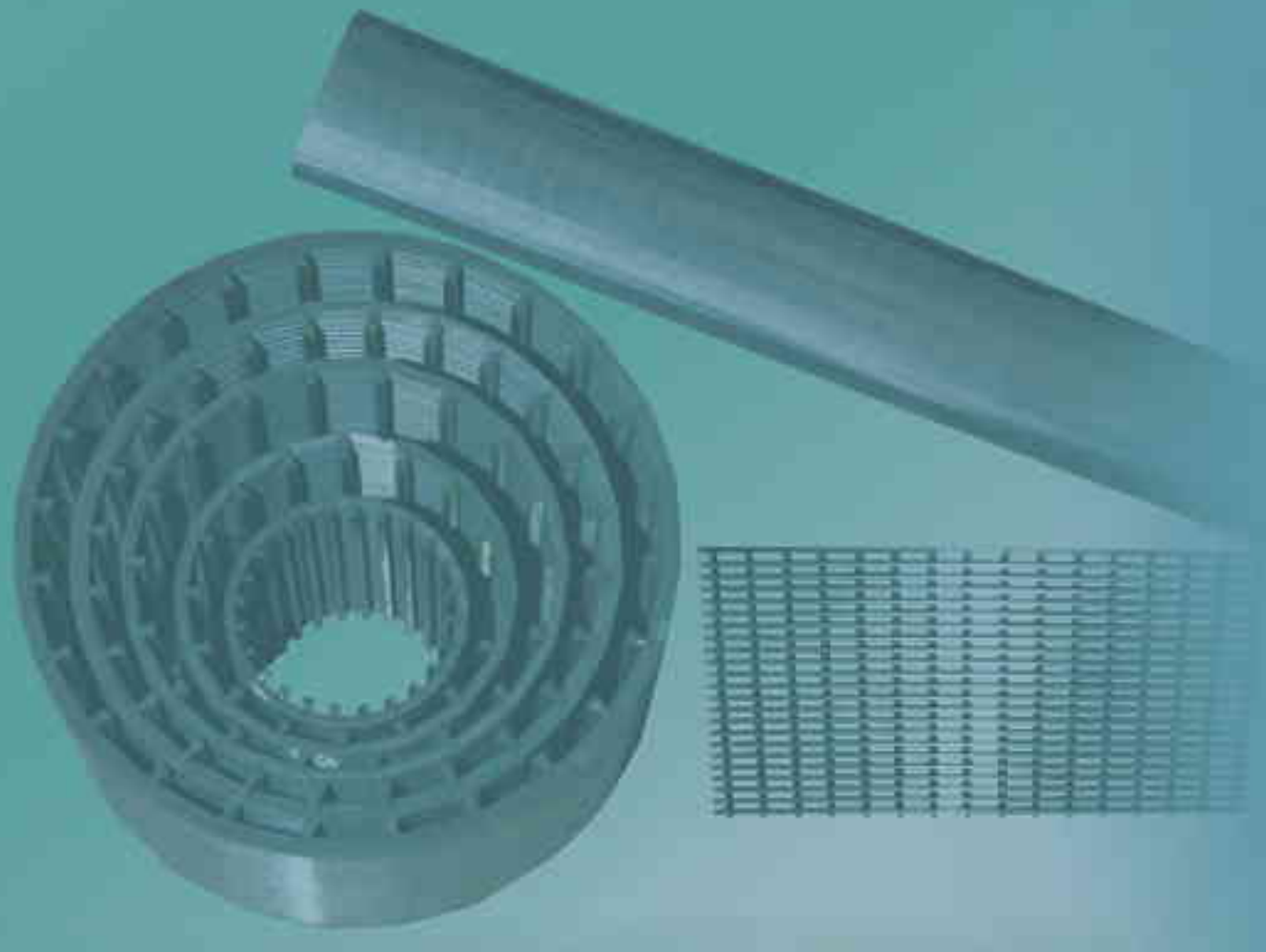
PIPE BASE SCREEN

P15.编织网/轧花网/不锈纲网/冲孔网

CRIMPED WIRE MESH/STAINLESS STEEL WIRE MESH/PERFORATED WIRE MESH

P16.其它

OTHERS



不锈纲梯形绕丝/Vee型丝/三角丝

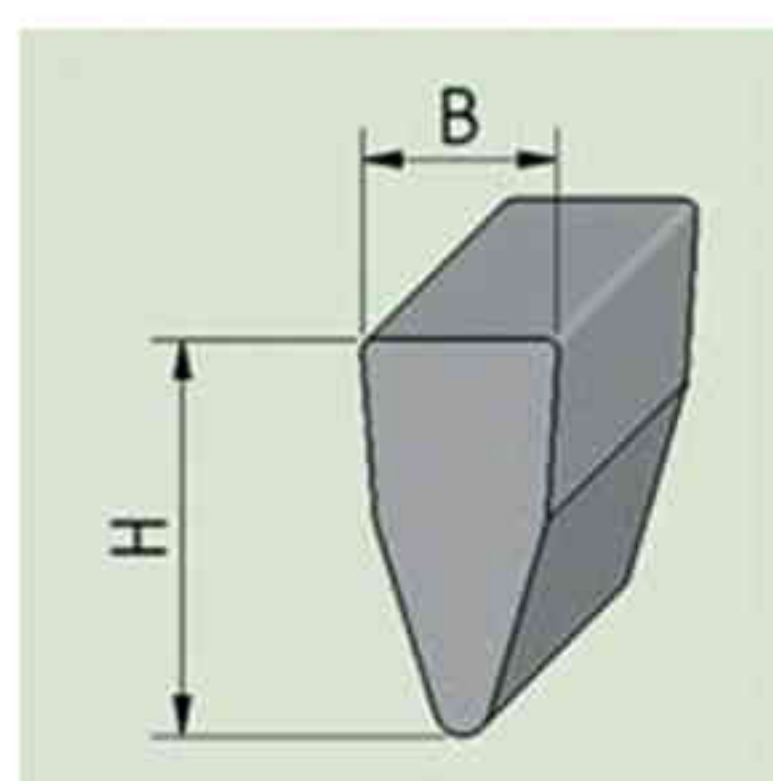
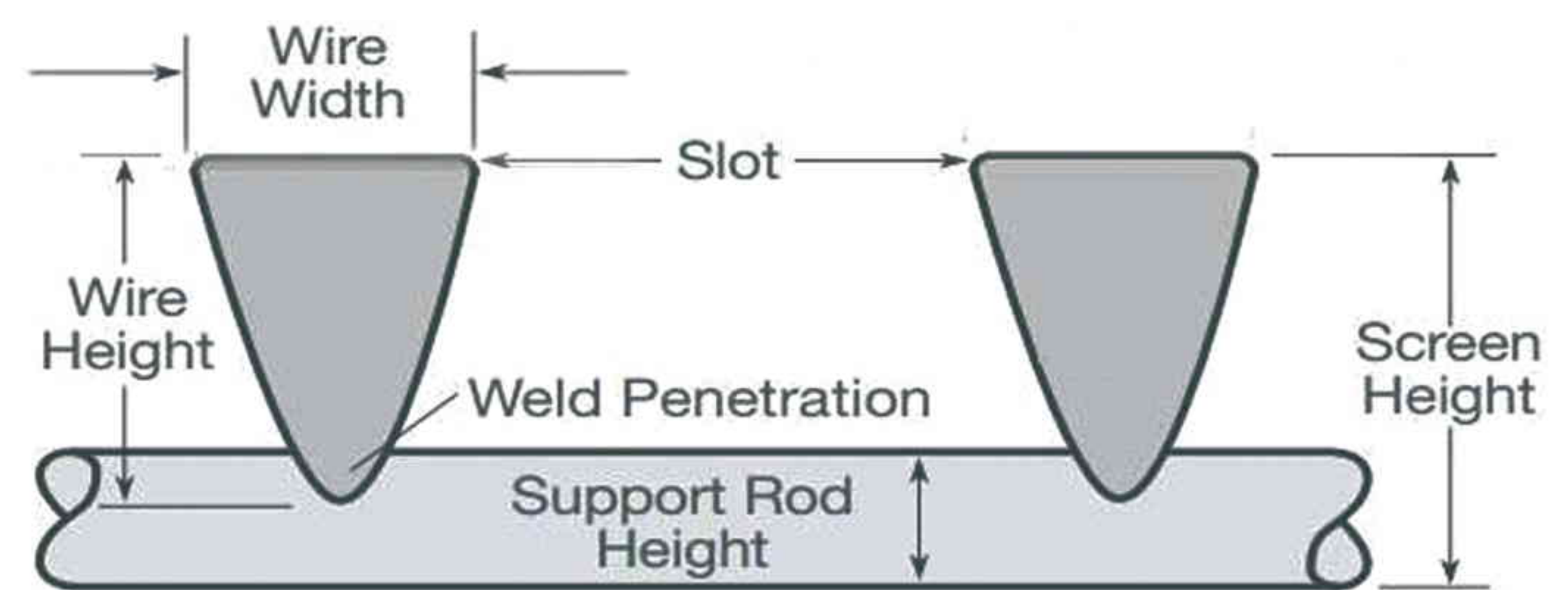
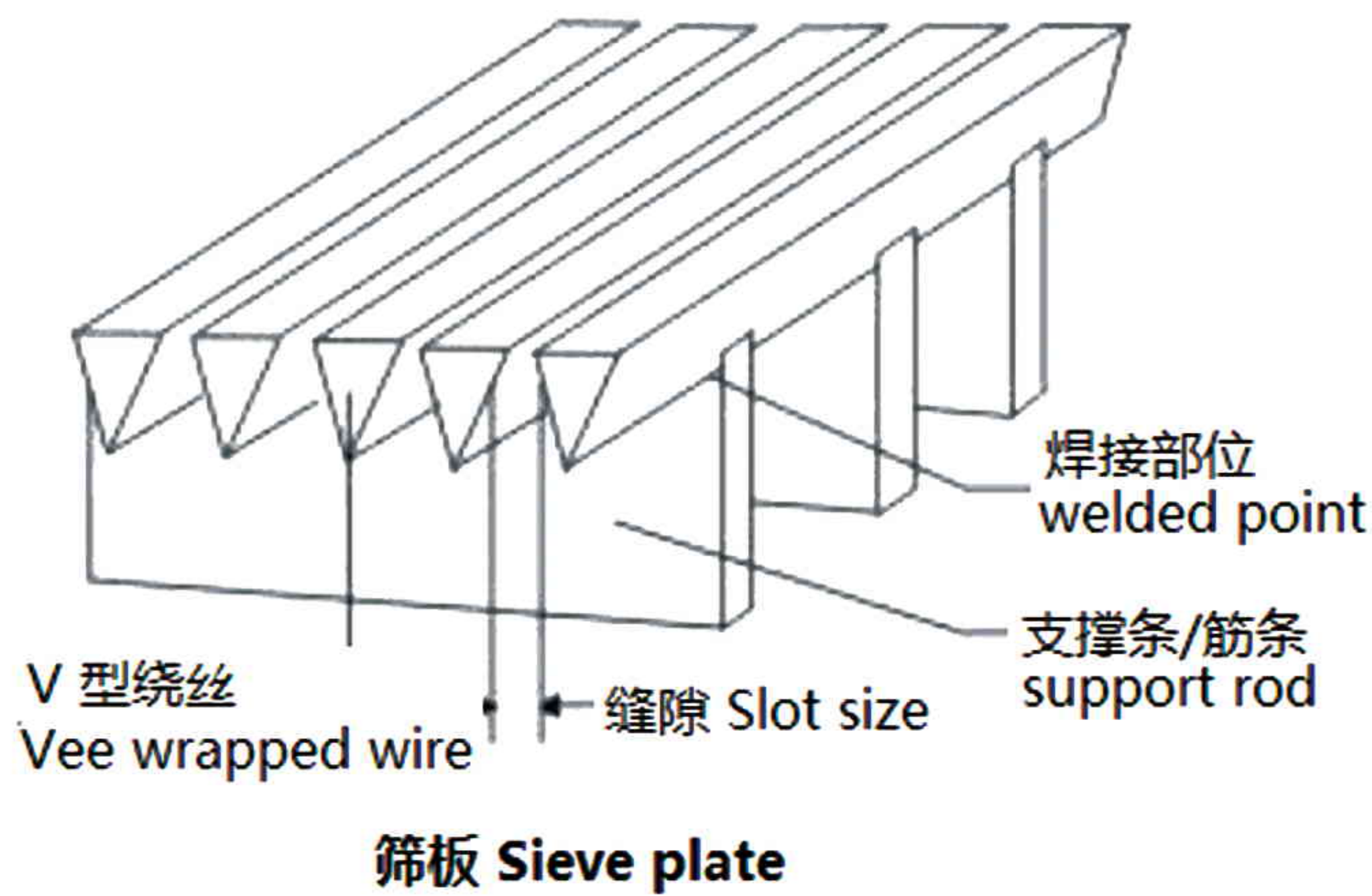
Stainless steel Vee shaped/Wrap wire

筛筒结构：

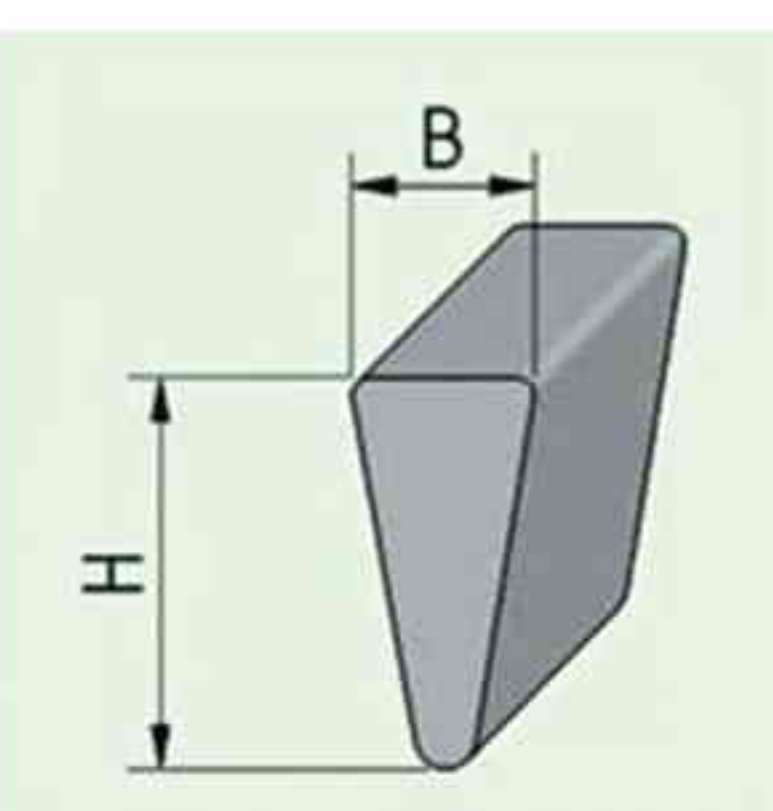
筛筒是由筋条与V型绕丝通过特殊工艺焊接在一起，使相邻绕丝形成具有定值缝隙的管状体。具有焊接强度高，缝隙均匀，耐腐蚀性能强，有效过滤面积大，渗透性好，结构简单等特点.根据用户需要，可以单独供货，结构如下图所示：

The structure of screen：

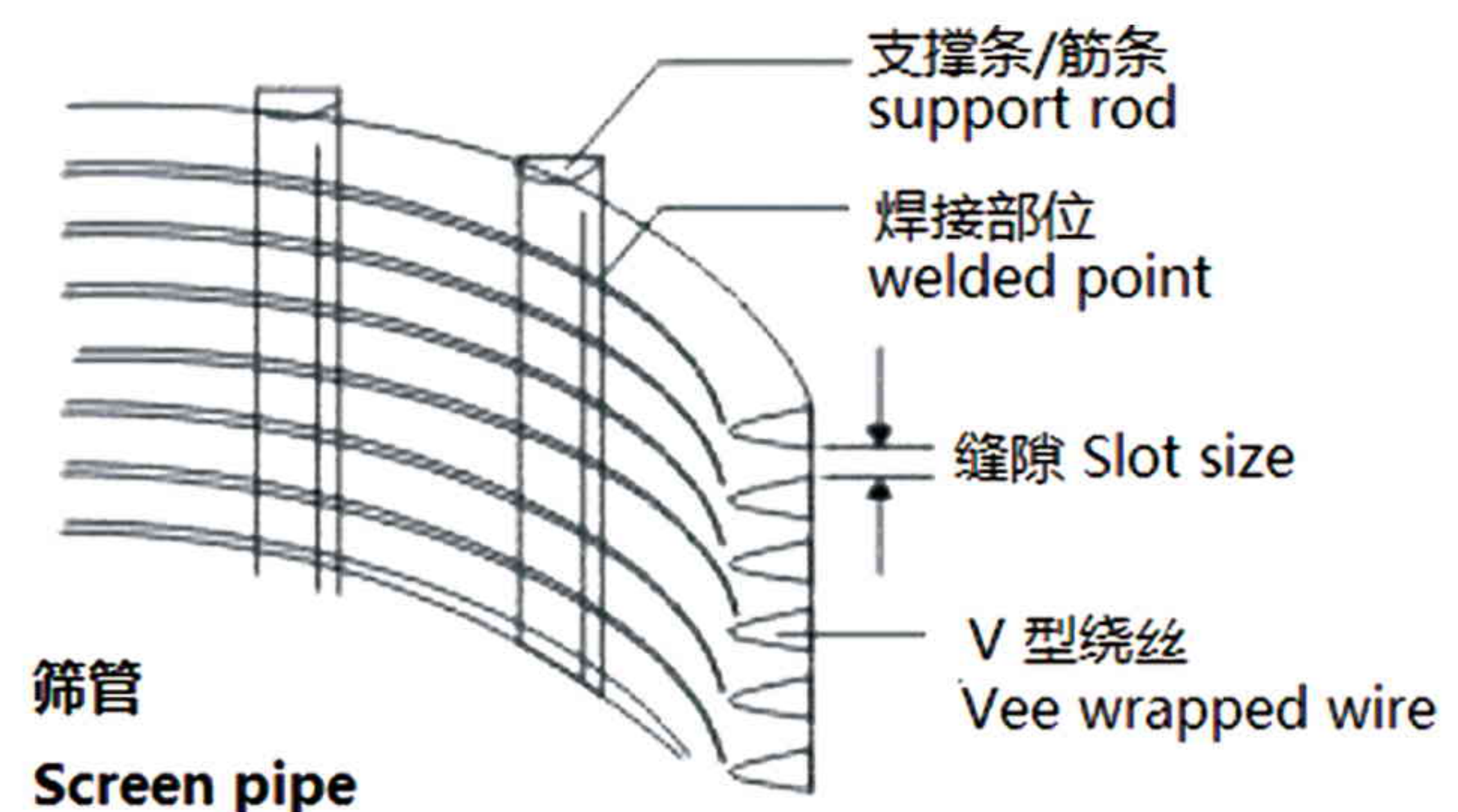
Screen pipe is made up of rod with Vee-shaped wire welded together by special technology, make the adjacent wire forming has a fixed value slot tubular body. High welding strength, slot even, corrosion resistance is strong, effective filter has big filter area, good permeability, simple structure and so on. we can make any size as your requirements.

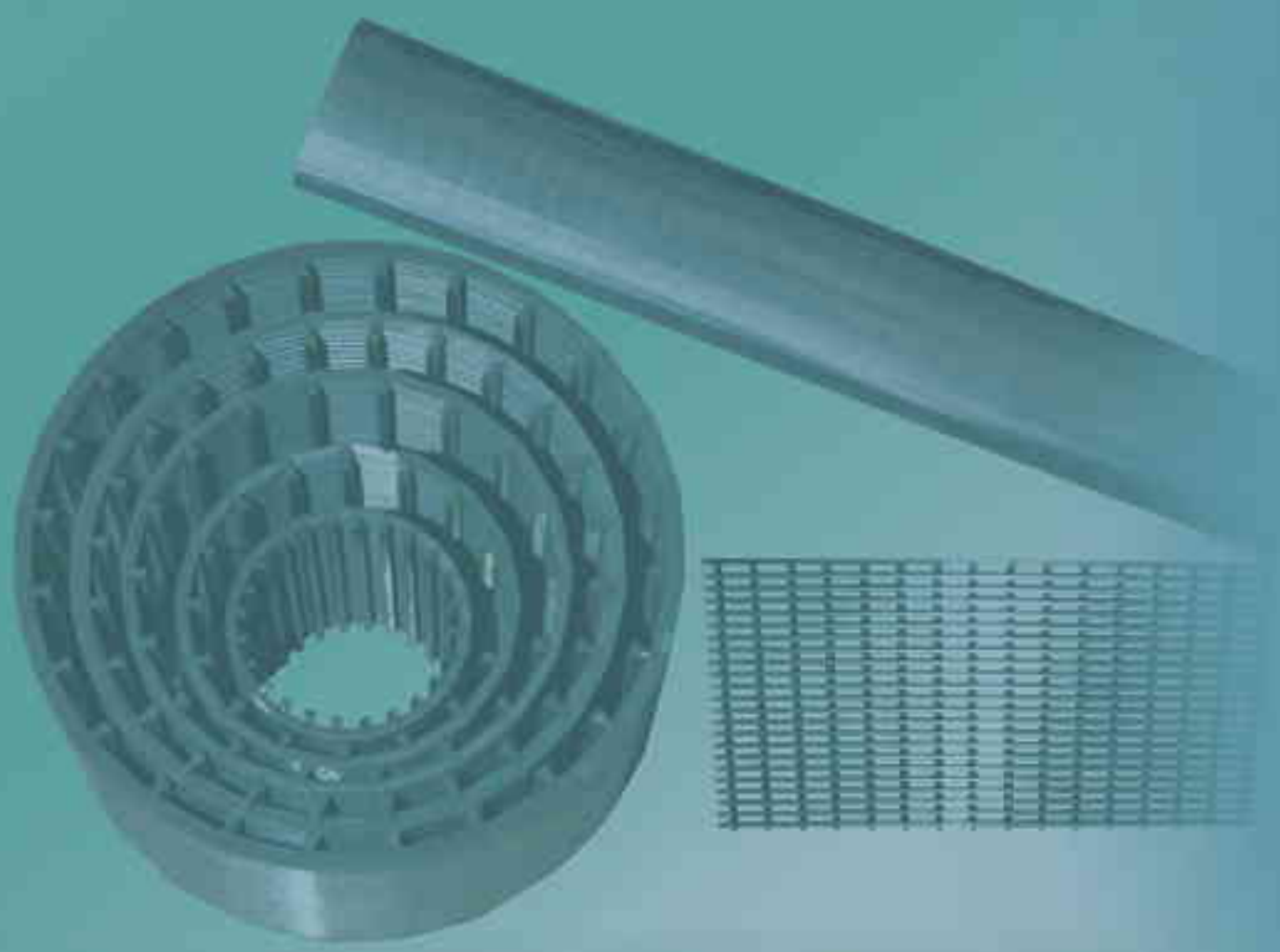


2.0	3.0	3.0
3.0	5.0	6.5



1.0	1.2	1.5	2.0	2.0	2.2	3.0	3.0	3.0	3.2	4.2
2.0	2.0	2.0	3.0	3.5	3.5	4.6	5.0	6.5	6.0	6.4





约翰逊网/矿筛网 Johnson screen

材质：低碳钢、低碳钢镀锌、不锈钢等。

形状：圆筒状、片状

圆筒状直径：2" 3" 4" 6" 8" 10" 12" 14" 16" (29-1000mm)

缝隙(mm):0.5, 0.75, 1.0。可订做

过滤方式：从外到内

长度：2.9米或5.8米，可订做

接头：螺纹接头、焊环接头

片状尺寸：长度100-3000mm，宽度100-3000mm

缝隙 (mm) ： 0.1,0.5,1.0，可订做。

Material: Low Carbon、Low Carbon Galvanized、Stainless Steel etc.

Shape:Cylinder and sheet

Cylinder Diameter:29-1000m

Slot size (mm):0.5, 0.75, 1.0mm in usual.

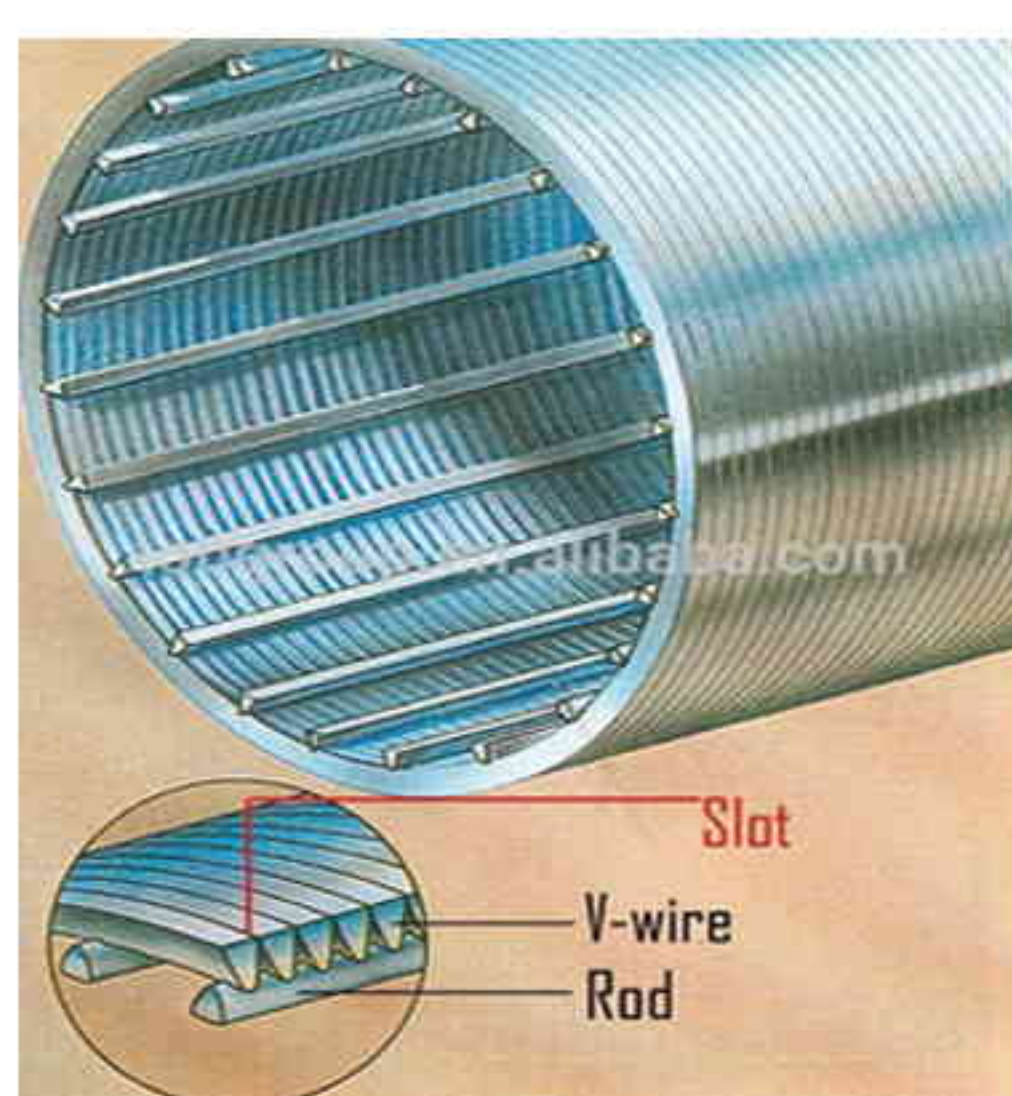
Filter type:From outside to inside

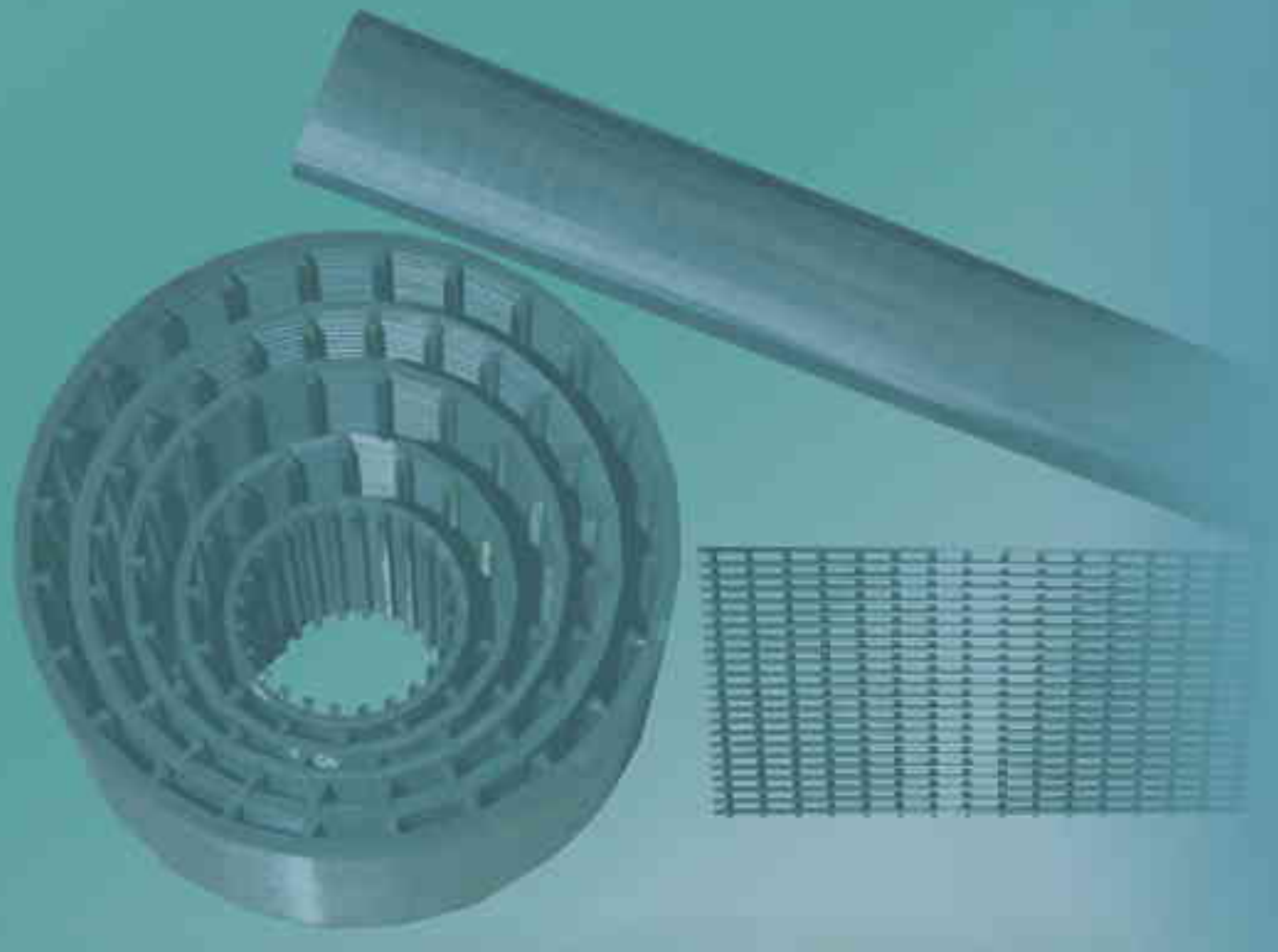
Length: 2.9m or 5.8m in usual to fit container

End connection:male/female threaded couplings
welded rings/plain beveled

Sheet size:length from 100 to 3000mm，width from 100 to 3000mm

Slot size (mm):0.1,0.5,1.0，or other size according to your requirements.





约翰逊网/矿筛网 Johnson screen

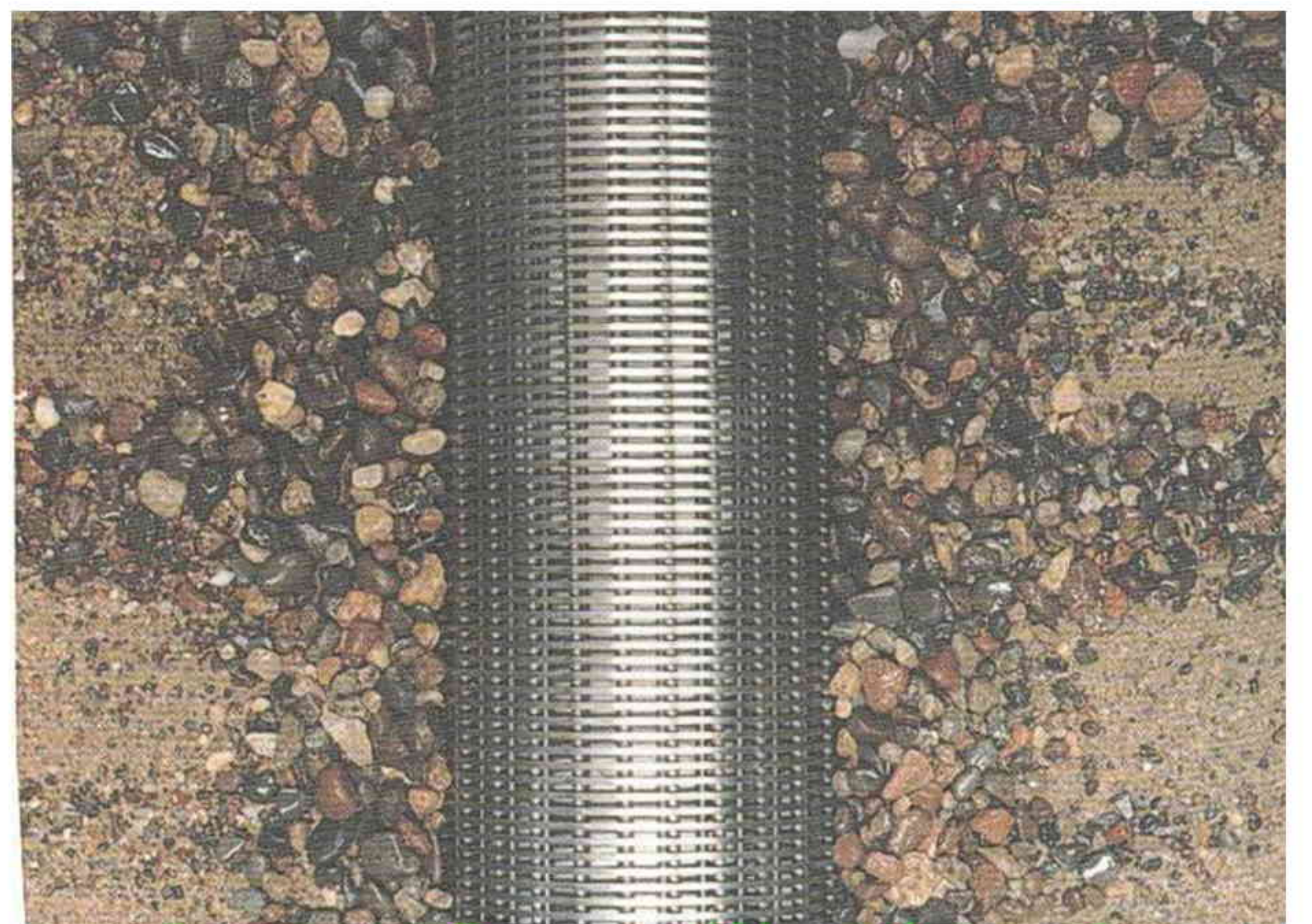
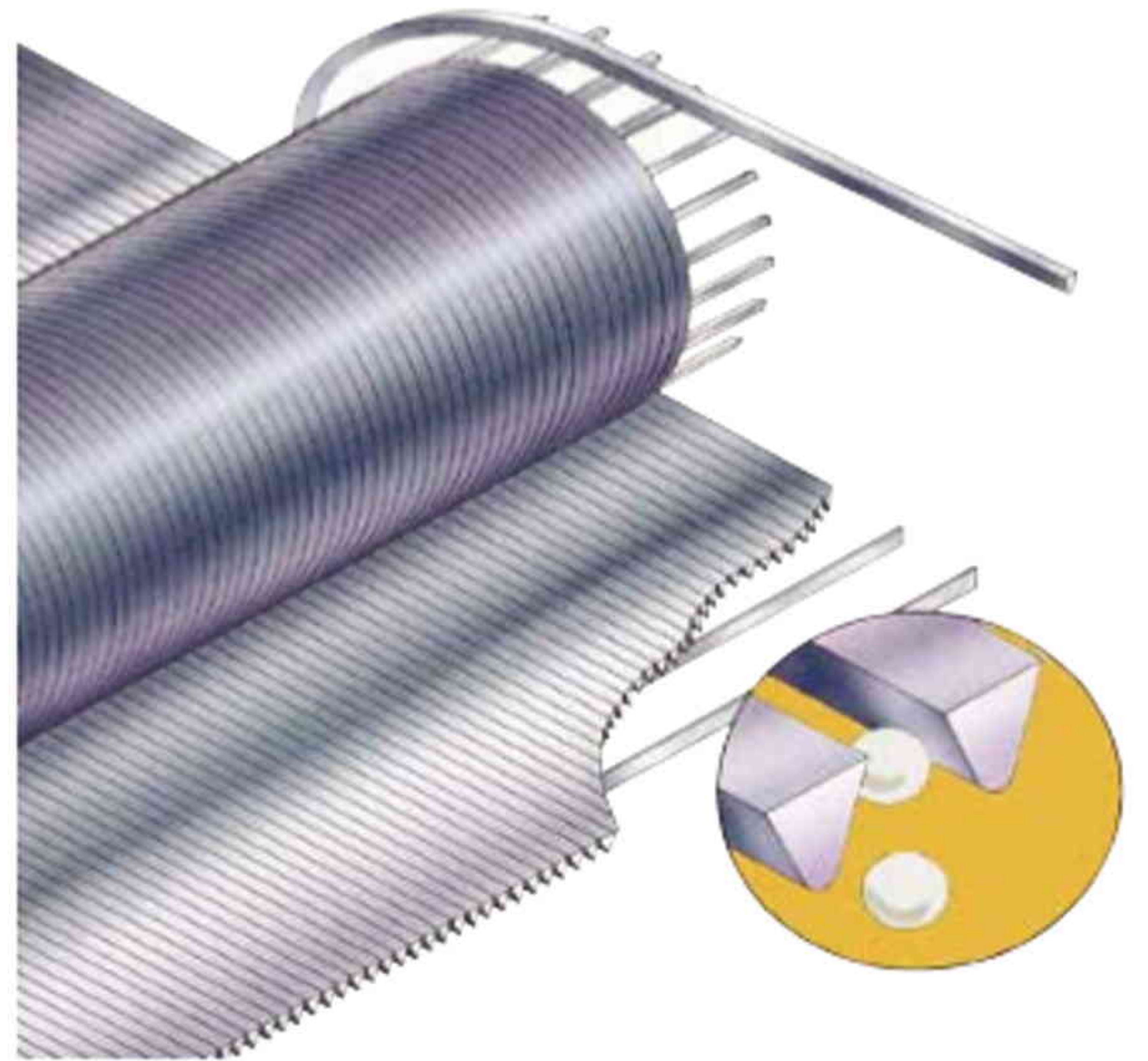
约翰逊网作为工业过滤器的世界领先的制造商和供应商，早在1904年就被世人认知。其用途如下：

- 水井
- 污水处理
- 供水系统
- 煤矿&矿山
- 食品加工机
- 环境保护
- 石化工业
- 建筑学等

Description:

Johnson strainer, Johnson filter, water well screen has been known as the world's leading manufacturer and provider of industrial filters since 1904. We provide screening solutions to almost every industry, including:

- Water Well
- Waste Water Treatment
- Water supply systems
- Coal & Mine
- Food Processors & Beverage Screens
- Environmental protection
- Refining & Petrochemical
- Architecture & Construction





水泵过滤管/滤水网管

Johnson type water well screen/Wound screen

水泵过滤管又称绕丝筛管，滤水管。
水泵过滤管是由V 型绕丝和圆形筋条在每个交叉点焊接而成。每个相邻绕丝之间的缝隙都是V 型的，这种缝隙的设计是为了不堵塞，因为外面的缝隙窄，里面的缝隙宽。它具有结构坚固、耐高温、耐腐蚀，机械性能好，使用寿命长、安全可靠等特点。可用于多种介质的过滤。

材质：低碳钢、低碳钢镀锌、不锈205，304,316,316L等

直径:2" 3" 4" 6" 8" 10" 12" 14" 16"

缝隙(mm):0.5,0.63，0.75,1.0,1.5，也可订做

长度:2.9m，5.8m，也可订做

端头连接:螺纹接头、焊接接头。

Material: Low Carbon、Low Carbon Galvanized、Stainless Steel etc.

Diameter:2" 3" 4" 6" 8" 10" 12" 14" 16"

Slot size (mm):0.5, 0.63, 0.75, 1.0，1.5mm in usual

Length: 2.9m or 5.8m in usual to fit container

End connection:male/female threaded couplings Or
welded rings/plain beveled ends

型号 (英寸) SIZE (INCH)	外径 (毫米) O. D (MM)	缝隙 (毫米) SLOT (MM)	长度 (米) LENGTH (M)	可承受外力 COLLAPSE STRENGTH (BAR)	拉伸力 TENSILE WEIGHT (TON)	筛丝规格 (宽*高) (毫米) WRAP WIRE (WIDTH*HEIGHT) (MM)	托条 (毫米) RODS (MM)
3-1/2	88.9	1.0	3	>22	10.2	2.3*3.5	3.8MM/22
4-1/2	114.3	1.0	3	>28	11.5	2.3*3.5	3.8MM/22
6-5/8	168.3	0.75	5.8	>40	12.8	2.3*3.5	3.8MM/32
6-5/8	168.3	1.0	5.8	>33	12.8	2.3*3.5	3.8MM/32
6-5/8	168.3	0.63	5.8	>83	45	3.2*6.0	6.0MM*32
8-5/8	219.1	1.0	5.8	>34	21.9	2.3*3.5	3.8MM/48
8-5/8	219.1	1.0	5.8	>50	38.2	3.0*5.0	4.0MM/48
8-5/8	219.1	1.0	5.8	>60	46	3.2*6.0	5.0MM/48
10-3/4	273.1	0.75	5.8	>50	32.9	2.3*3.5	4.9MM/55
10-3/4	273.1	1.0	5.8	>60	39.5	3.0*5.0	4.9MM/55
10-3/4	273.1	1.0	5.8	>100	48	3.2*6.0	5.0MM/55
12-3/4	323.9	1.0	5.8	>120	37.2	3.0*5.0	4.0MM/50
14	355.6	1.0	3	>80	37.8	3.0*5.0	4.0MM/59





水泵过滤管/滤水管

Johnson type water well screen/Wound screen

Johnson type water well screen

Water well screen also be named Well screen, Continuous slot Vee-wire screen, Wire wrapped screen, Wire wound screen, Rod base screen casing, Water well screen pipe is made up of Vee-shaped wire and round rod in each intersection welded together. Each slot opening between adjacent wires is V-shaped, resulting from the special shape of the wire used to form the screen surface. The V-shaped openings, designed to be non-clogging, are narrowest at the outer face and widen inwardly. It has the firm structure, high temperature resistant, corrosion resistance, good mechanical performance, long service life, safe and reliable, etc. It also can be used for a variety of medium.

Water well screen permit water to enter along the entire screen and allow maximum access to the water bearing strata enabling proper development.

The benefits from this screen design are:

Lower pumping costs

Water well screen have more open area than other screen types, which lets more water enter more easily. This creates less drawdown inside the well reducing the energy demand on the pump.

Less pump wear

Properly designed screens prevent sand from entering the well, preventing abrasion of pump impellers. The low entrance velocity also reduces sand pumping and head loss.

Longer well life

Because water enters the well easily, it can move at a low velocity-0.03m/s or less (0.01ft/s). Higher velocities create higher pressure drop or head loss, allowing gases to pass out of the solution, leading to encrustation of the screen surface.

Continuous-slot screens provide more intake area per unit area of screen surface than any other type. For any given slot size, this type of screen has maximum open area.

Due to its high open area, our screens can be developed more effectively as more of the development energy can reach the formation. This ensures that more fine material is removed quickly as all the energy can be directed at the surrounding formation.

The continuous slot Vee-Wire screen is recommended in the following situations:

1. Formation comprised of small or fine particles
2. Water wells where gravel packs will be installed
3. Thin aquifers where maximum open area is required
4. Small diameter wells



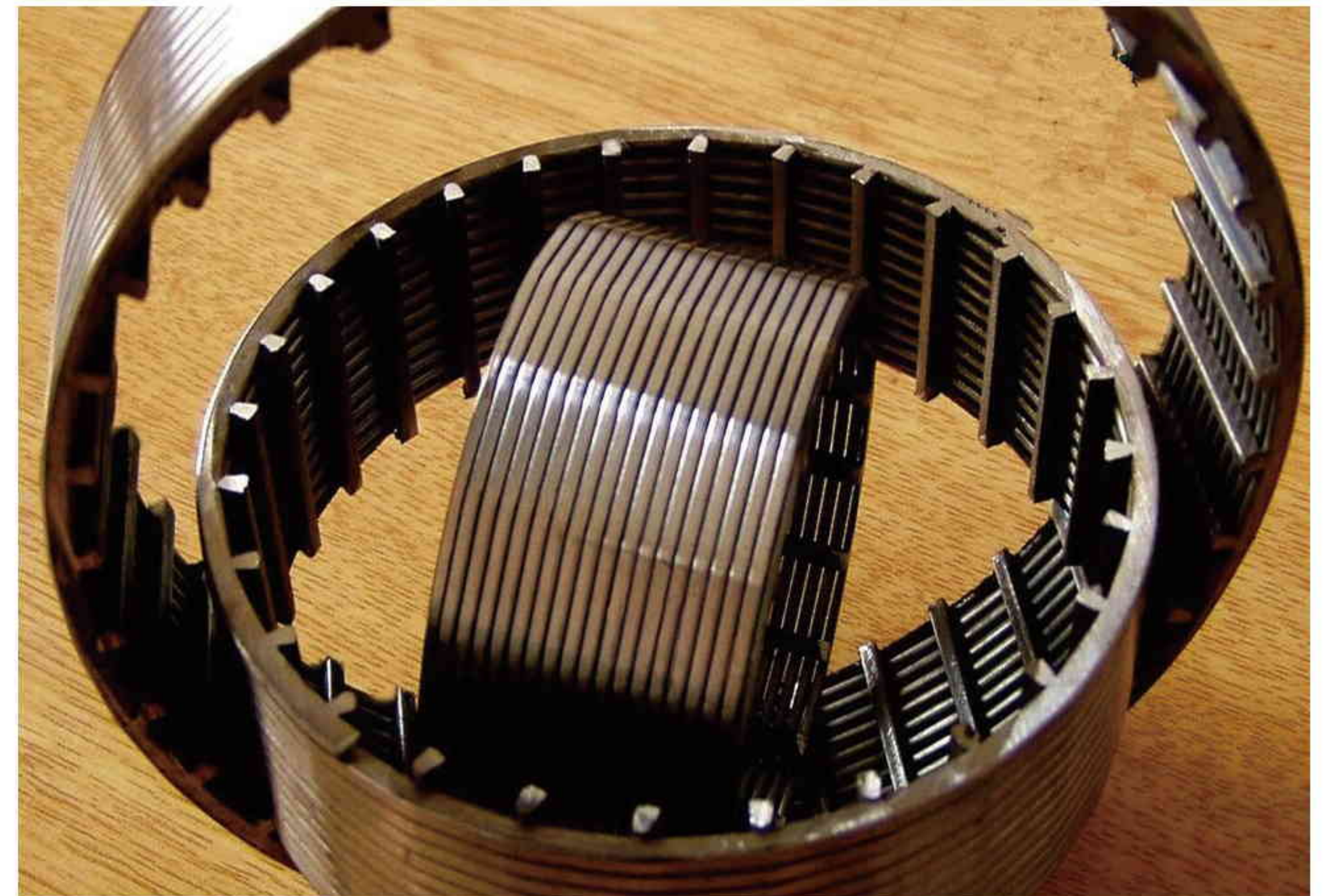


楔形丝筛管/ Wedge wire screen

又称梯形丝筛管、V型丝筛管，是由绕丝和支撑条（托条/筋条）两部分构成。支撑条可以是圆丝也可以是V型丝（楔形丝、梯形丝、三角丝），筛丝是V型丝，缝隙精确，过滤精度高。

楔形丝筛管与其他类型的过滤筛比较，有以下优点：

- 1.楔形丝外宽内窄，提高了脱水效率
- 2.V型剖面结构避免堵塞,确保流通顺畅。
- 3.缝隙从0.05mm到20mm之间，可订做
- 4.耐磨损，承重能力强
- 5.整体式结构
- 6.材质广泛
- 7.容易反冲洗,使用寿命长,安全可靠,综合成本低。



Wedge wire screen also be named Vee-Wire screen pipe, Continuous slot Vee-wire screen tube, Wire wrapped screen, Wire wound screen, water filter. It is made up of Vee-shaped wrapped wire and round rod in each intersection welded together. Accurate slot and high filtration precision.

Advantages wedge wire screens offer when compared to other types of screening include:

- 1.The wedge tapered opening becomes progressively wider increasing dewatering efficiency
- 2.Non plugging, to make sure the smooth circulation
- 3.Slot sizes ranging form 0.05mm to 20mm
- 4.Durable and capable of carrying heavier loads without support structures
- 5.One piece construction
- 6.Wide range of materials
- 7.Easy to clean, long service life, safe and reliable, low comprehensive cost



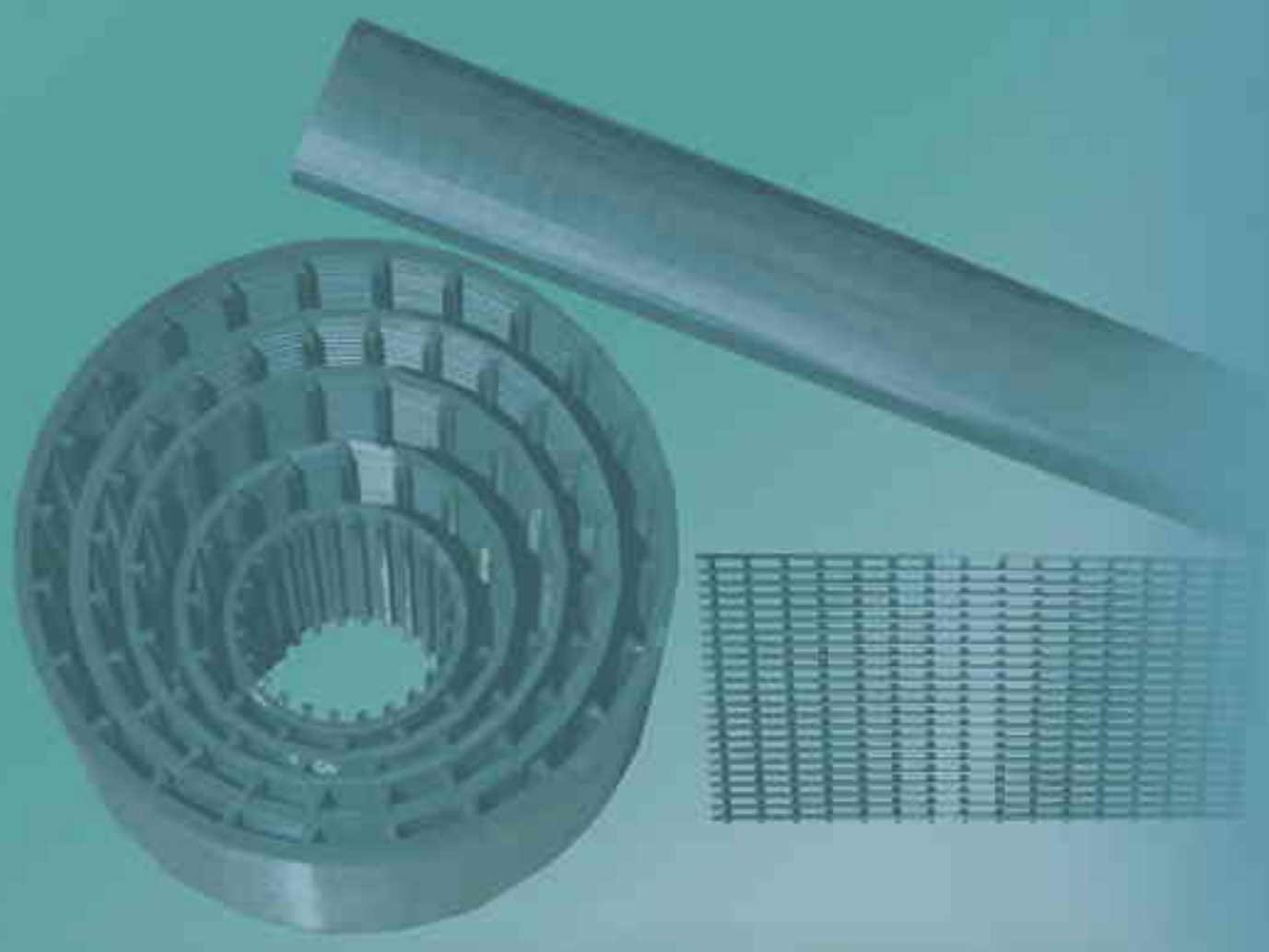


楔形丝筛管 / Wedge wire screen

材质：铁丝，不锈钢丝
直径:29-1200mm，可订做
缝隙(mm):0.05-30mm，可订做
长度:10-3000mm，可订做
接头:螺纹、焊环、法兰、盲封、同种缝隙筛片封死
Material: Low Carbon wire、Stainless Steel wire
Diameter:29-1200mm,can make as customers request
Slot size (mm):0.05-30mm,can make as customers request
Length:10-3000mm
End connection:male/female threaded couplings,welded rings/
plain beveled ends,flange,closed end plate,same slot sieve plate



筛管直径（mm） Outside Diameter	筛管长度（mm） Length	筛管缝隙（mm） Slot	筛管接头形式（mm） Styles of connection
29、38、42、57、 63、76、89、108、 150、168、320、600、 900、985	1000、2000、3000	0.05、0.1、 0.25、0.5、1.0	焊环接头、螺纹接头、法兰接头、盲封 Welded rings、male/female threaded coupling、flange、closed up
说明 Explanation	除以上规格的筛管以外，还可以根据客户要求制造直径从 Φ 29mm-Φ 1000mm，长度从 100mm-250mm 系列筛管 Besides above of the specification screen pipe, we also can act according to the customer's request the manufacture diameter from Φ 29mm- Φ 1000mm, the length from the 100mm-4000mm series screen pipe		



反冲洗筛管/Reverse wedge wire screen

楔形丝筛管有两种过滤方式：

外过滤：顾名思义就是液体流向由外向内。由于筛条断面为梯形，所以缝隙总外小内大，极有利过滤及冲洗。（内进液相反）

内过滤：反之液体流向由内到外就是内过滤。又称反卷，外翻。它是用V型截面的钢丝焊接在多棱骨架上制成，每相邻两根钢丝之间形成精密过滤缝隙，便于在反冲洗时能将滤渣顺利排除，达到连续供水功能。

用途：污水处理，粪便过滤等。

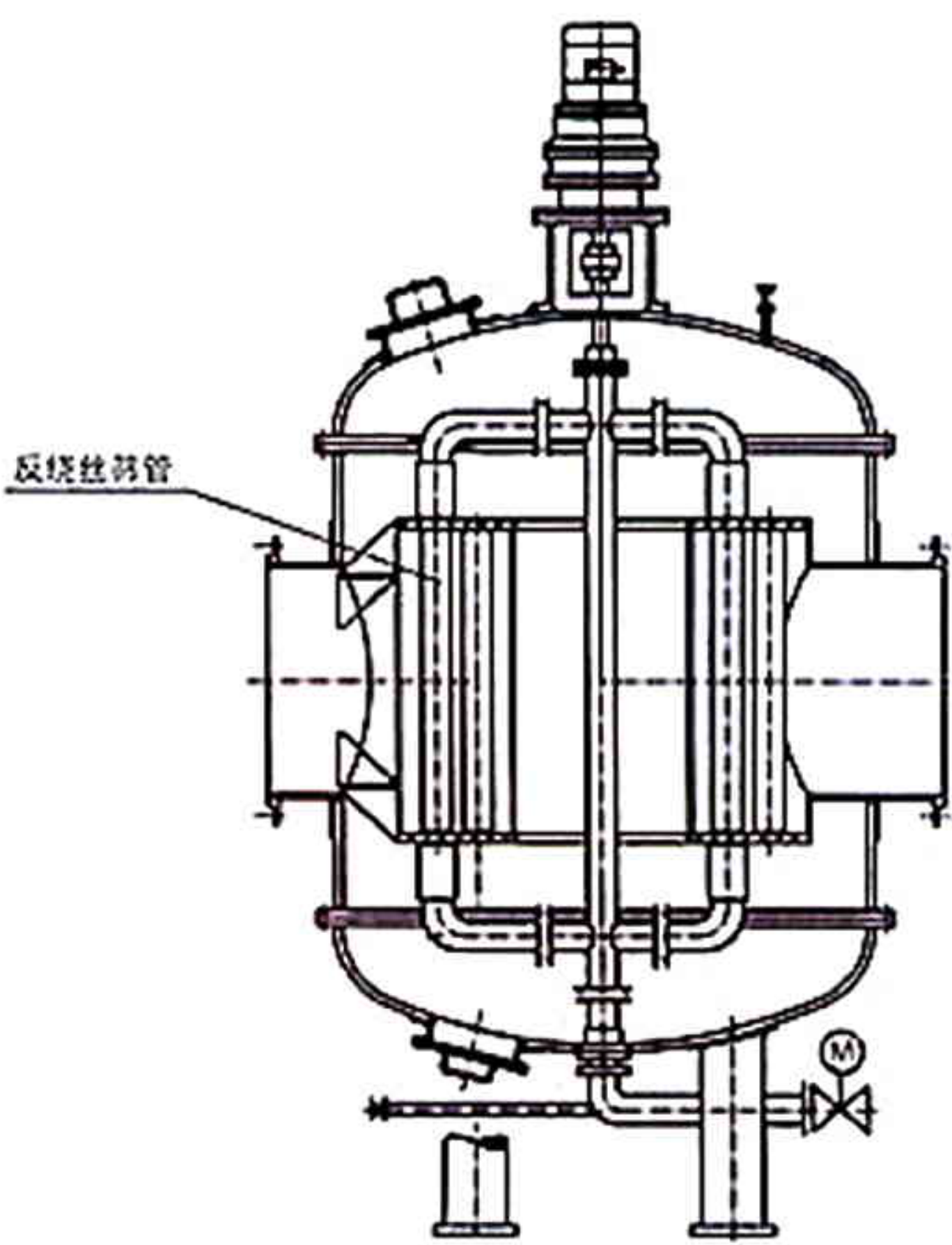
Wedge wire screen has two filter types:

From outside to inside (FOTI) :

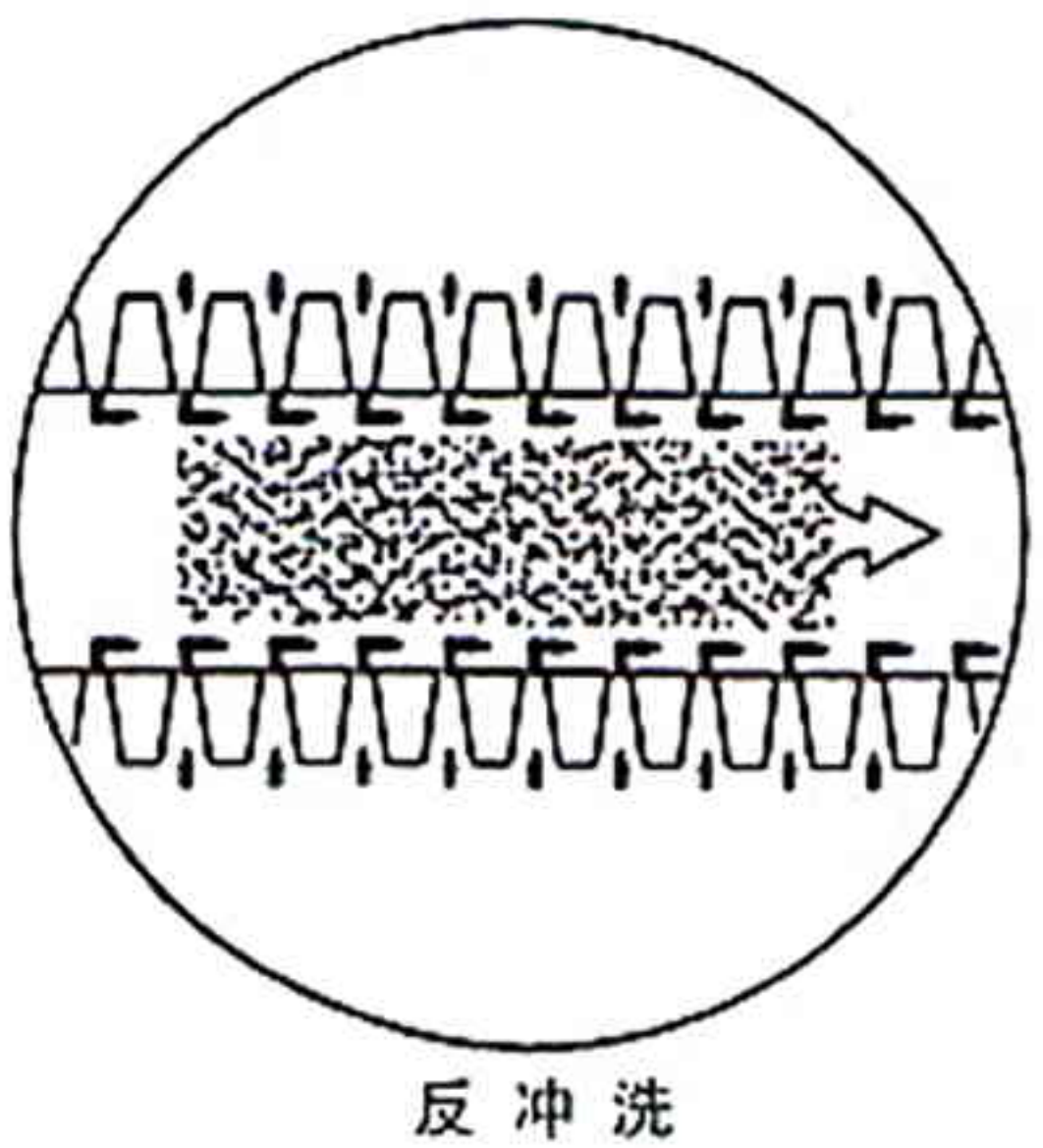
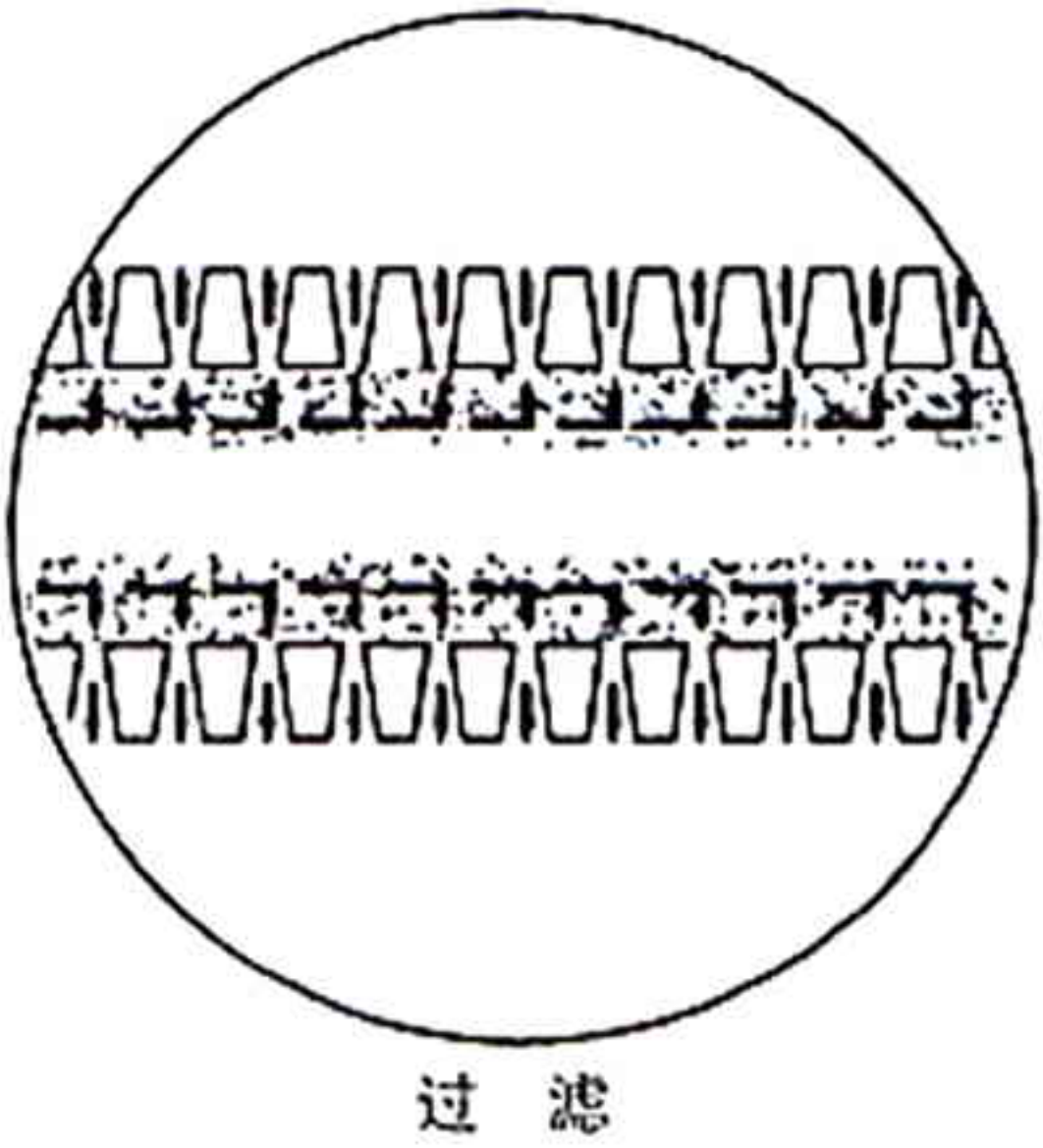
Just as its name implies, the liquid flowing outside to inside. Due to the section of wrap wire is trapezoidal, so the slot outside is small and slot inside is big ,to ensure good filtering and washing.

From inside to outside (FITO) :

Whereas, the liquid flow from inside to outside. It is with v-shaped cross-section of the stainless steel wire welded on framework, precision filter slot formed between every two adjacent wrap wire, facilitate the back flush filter residue can be ruled out smoothly, to achieve continuous water supply function.



反绕筛管工作图





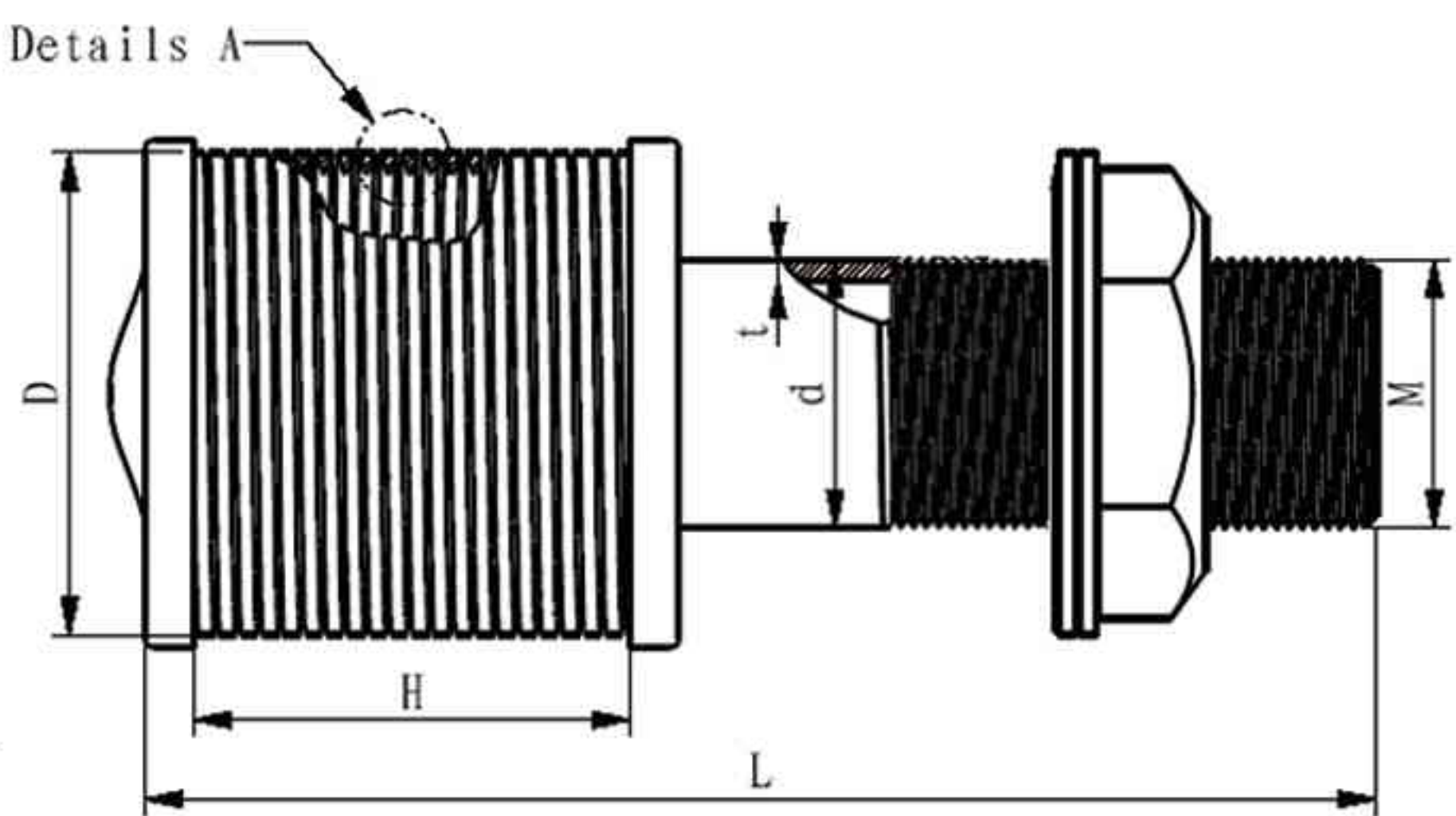
水帽/绕丝水帽/喷嘴

Screen nozzle/Water and gas strainer

注：1.本水帽专为美国休斯公司设备配套的更新换代产品。可拆开清洗内部，是更新换代产品，真正做到更换一次终身受益，降低了生产成本。
2.本水帽为美国技术。
3.材质304 (0Cr18Ni9)、321 (1Cr18Ni9Ti)、316L (00Cr17Ni14Mo2)、钛钢等

序号 (NO.)	型号 (Type)	吨位 (Ton)	缝隙 (Slot) (mm)	外形尺寸 (Size)				0.2-0.25 缝隙的通流面积 mm² (参考值) 0.2-0.25mm slot opening area of through-flow mm² (reference)
				D	L1	L	M	
1	TYS45-1-C	0.5	0.2-0.5	45	45	95	24	550-690
2	TYS53-2-B	1	0.2-0.5	53	45	100	24	680-710
3	TYS53-2-C	1.5	0.2-0.5	53	50	110	32	800-920
4	TYS57-3-B	2	0.2-0.5	57	45	110	32	660-790
5	TYS70-4-B	3	0.2-0.5	70	55	120	32	905-1100

注：1、水帽均配一只橡胶垫片、同种材质的一只钢垫片和一只薄型螺母。
2、用户可提供多孔板的厚度。
3、图表中规格为常用规格，也可以按照用户的特殊要求加工生产。
1.The size in the form is frequently-used, we can also make the screen nozzle as your request.
Material: Stainless Steel 304,321, 316L,titanium steel etc.





筛片 筛板

Sieve plate/Slot mesh

材质:铁丝、205、304、304L、316、316L等不锈钢丝。

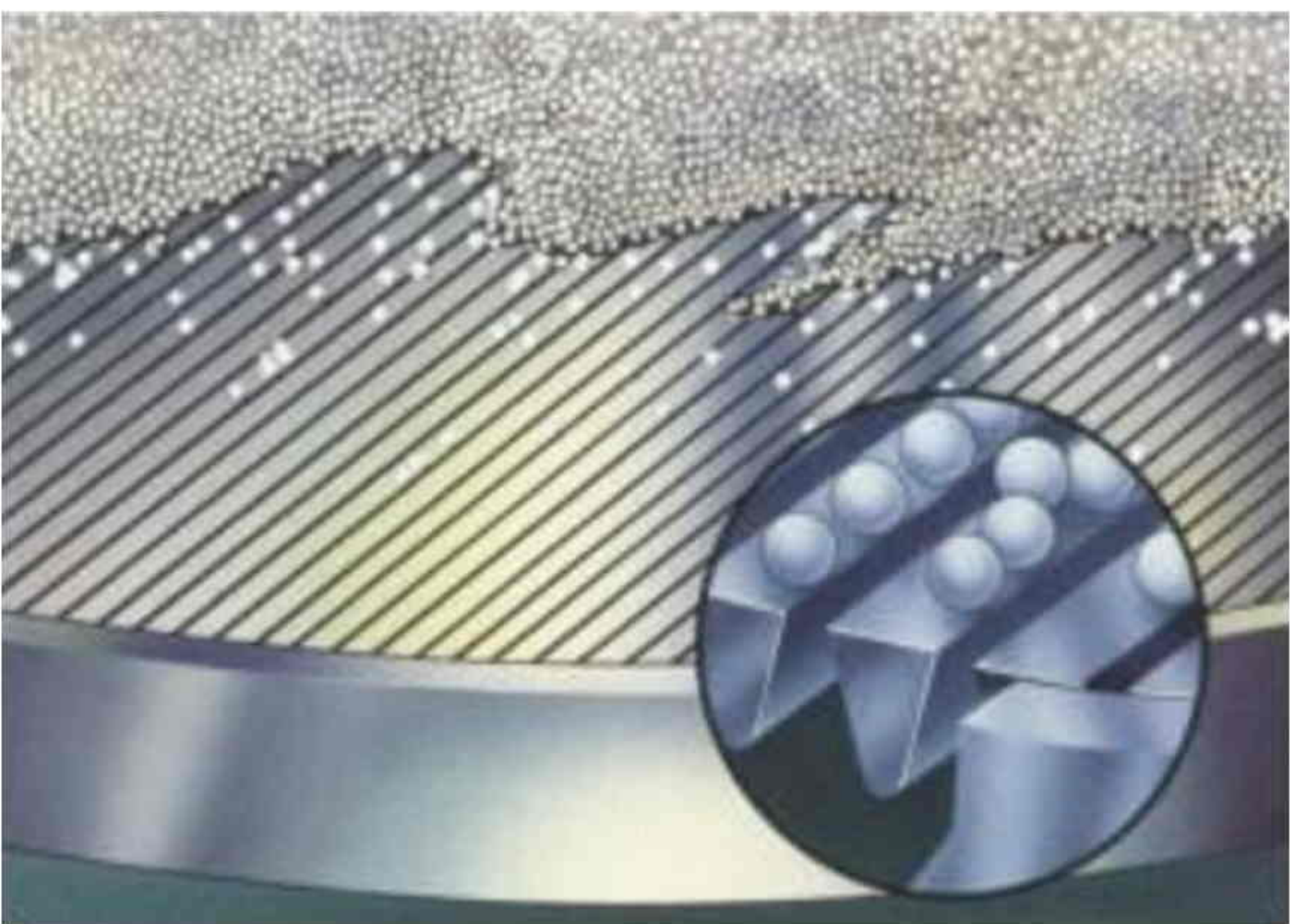
缝隙：0.1-20mm，可以根据客户的要求订做。

尺寸：3000mm（筛丝）*2500mm（托条）

框架：铁框，不锈钢框，聚氨酯包边，或者不带框架。

形状：平板。

用途:可用于多种介质的过滤和筛选,广泛应用于多行业中的筛分、过滤、脱水、脱泥等作业。



- * 矿业机械:用于选煤厂选煤的脱泥脱水。
- * 麦牙机械:适用于麦牙厂精选机、发牙床及干燥炉的使用。
- * 啤酒机械:适用于啤酒厂过滤槽内使用,具有开孔率高、使用寿命长等优点。
- * 环 保:用于油、气、水井中通过砂石填充,可防地层出砂保护井下和地面设备。具有开孔率高、过滤面积大、过滤速度快、使用寿命长等优点。
- * 食品工业:可用于食品饮料等的过滤工序。
- * 化工及其它:用于糖厂、造纸厂的污水处理；化肥厂的物料过滤、脱水及各类烤漆房的配套使用；食品厂的淀粉过滤；用于粮食仓储的通风。

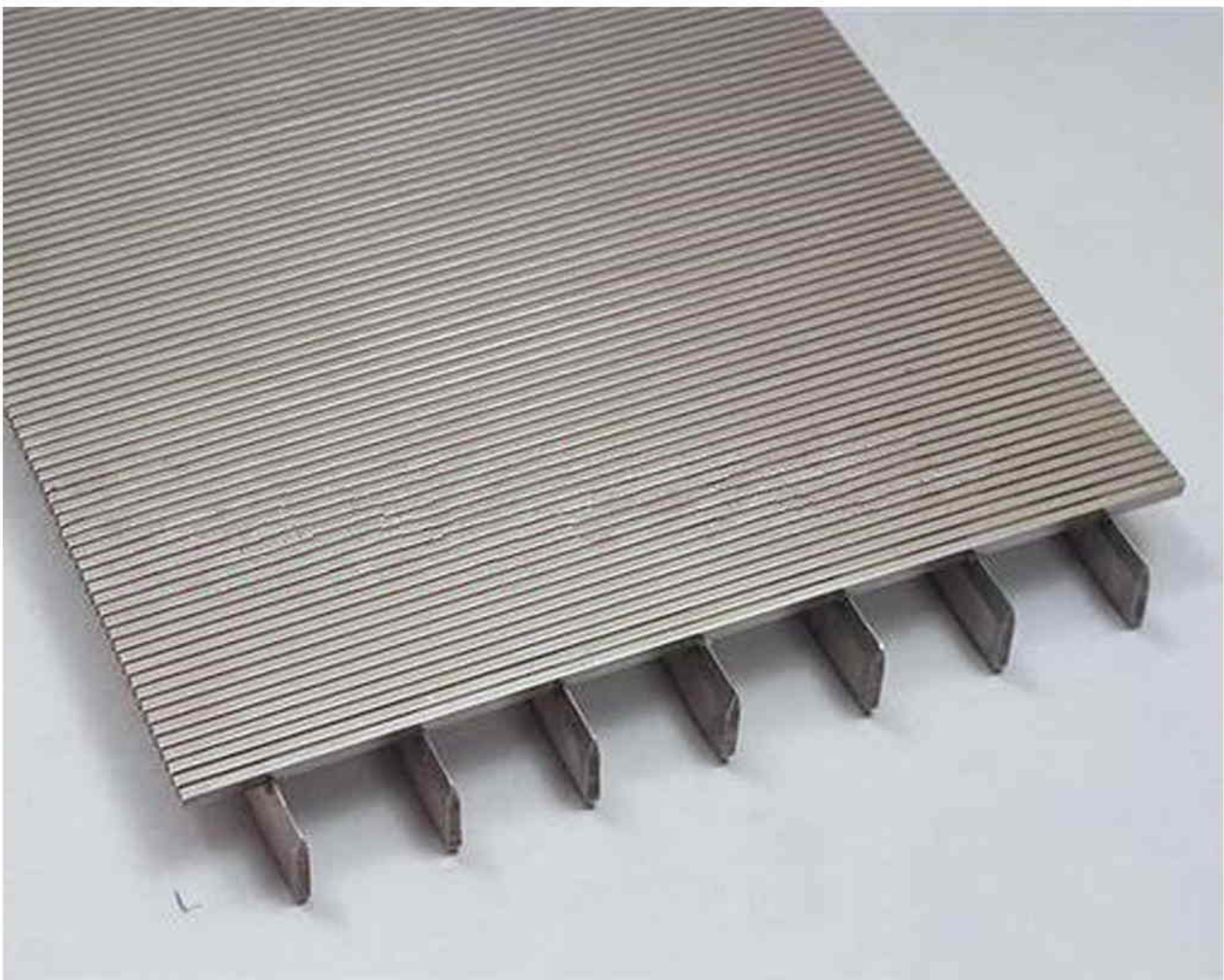
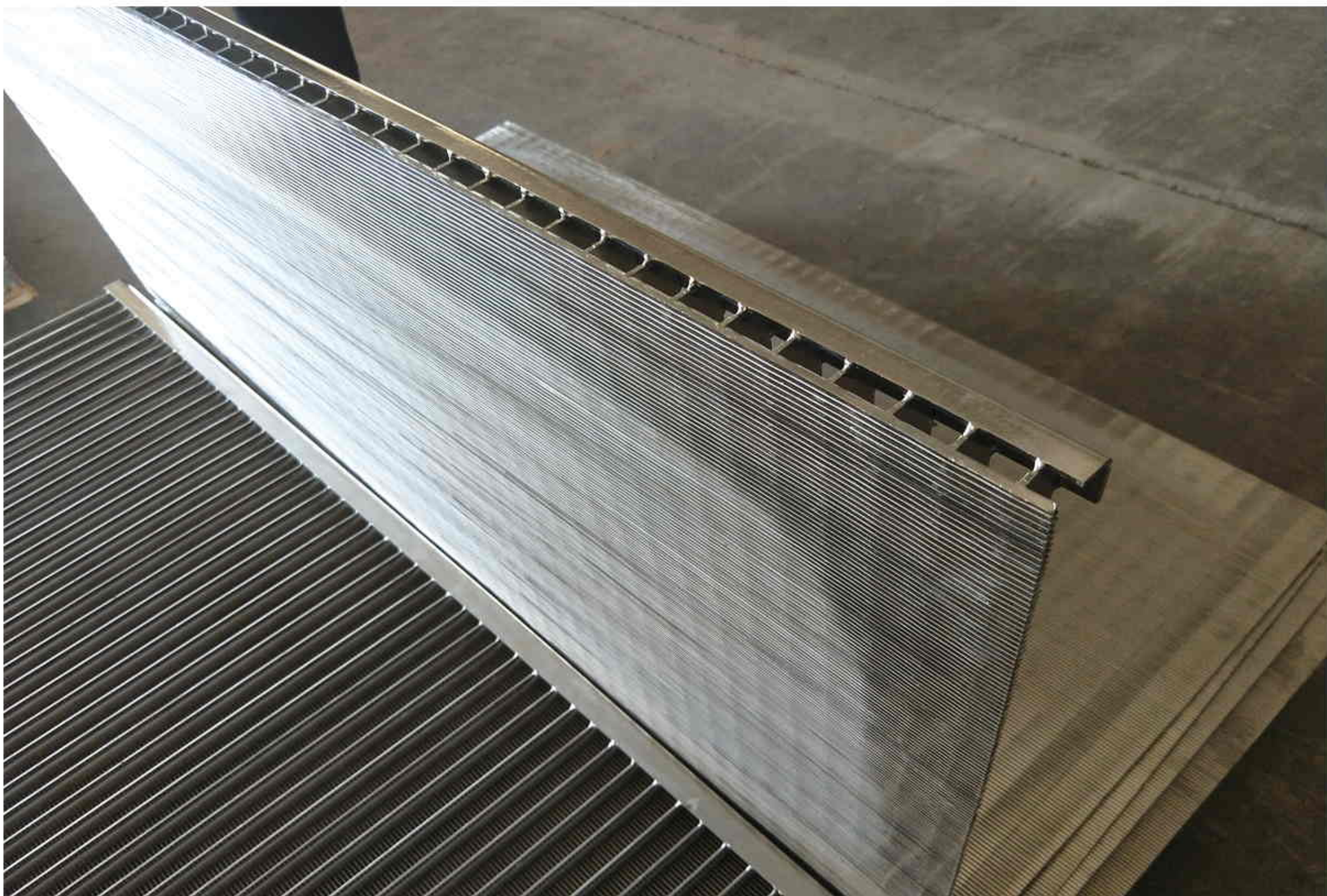
Material: Low Carbon、Stainless Steel etc.

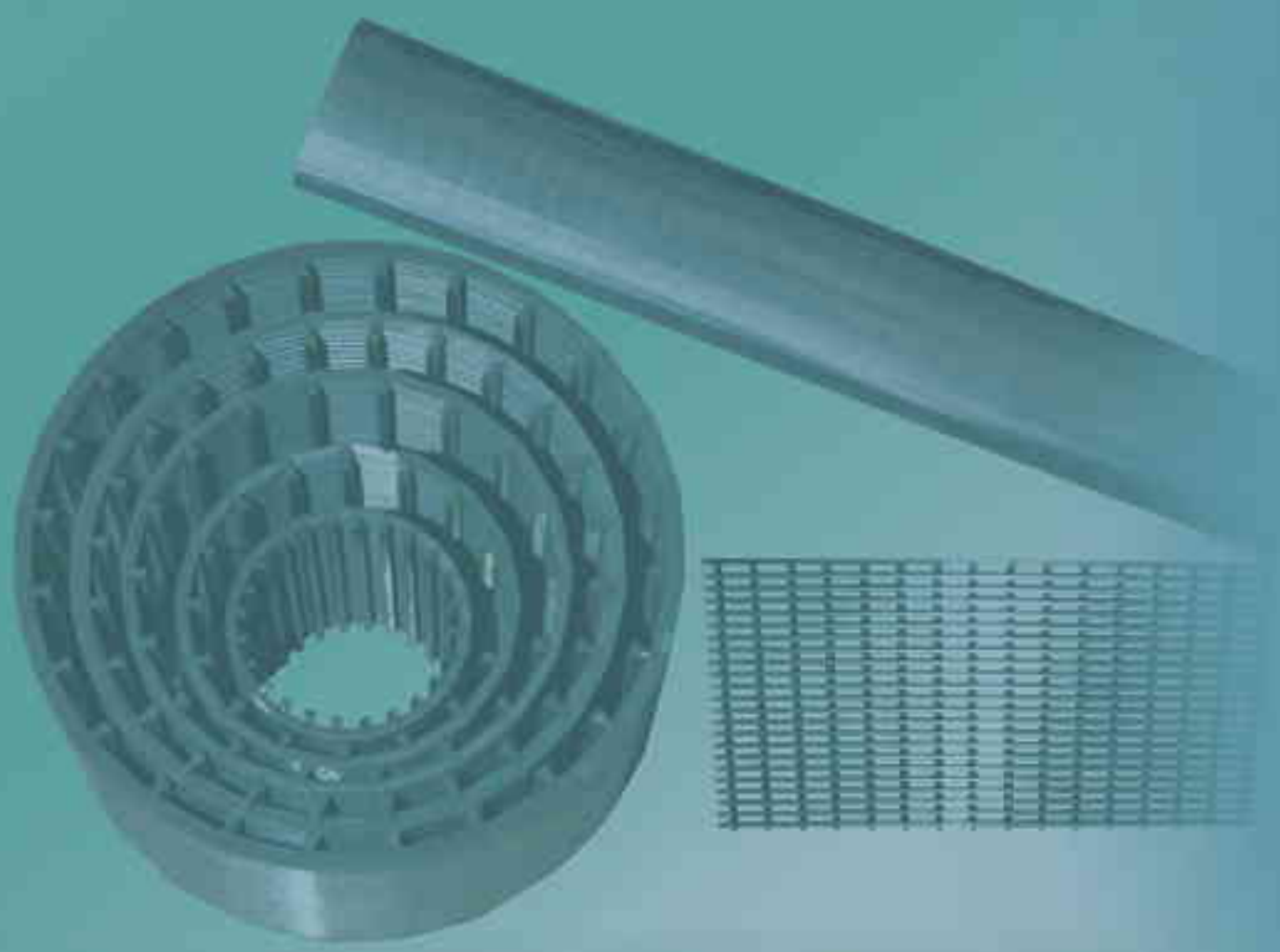
Slot(mm):0.1-20mm, also achieved upon customer request.

Size:3000mm(wire)*2500mm(support rod).

Frame:Iron Frame, Steel Frame, Polyurethane or Nothing.

- Use: It can be used in the water-treating equipment, mineral processing, coal-cleaning plant,environmental protection and so on.





弧形筛/ Arc screen

工业用弧形筛 Industrial arc screen

材质:铁丝或205、304、304L、316、316L等不锈钢丝

缝隙: 0.1-20mm, 可以根据客户的要求订做

尺寸: 3000mm (筛丝) * 2500mm (托条), 也可订做

形状: 带弧度

用途: 污水处理

Material: Low Carbon、Stainless Steel etc.

Slot(mm):0.1-20mm, achieved upon customers request

Size:3000mm(wire)*2500mm(support rod),also can make as customers request

Shape : Arc screen

Use:Waste water treatment

养殖用弧形筛/渔业弧形筛

Fishery arc screen/Breeding industry

材质: 316L不锈钢丝

缝隙: 常规0.25mm, 可根据客户要求订做

尺寸: 2400*900mm, 2000*900mm, 1900*900mm, 1800*900mm, 2000*1000mm可订做

形状: 带弧度

用途: 养殖业污水处理

Material: 316L stainless Steel wire

Slot(mm):0.25mm in usual, can make as customer request.

Size:2400*900mm,2000*900mm,1900*900mm,1800*900mm

2000*1000mm in usual,we can also make as customers request.

Frame:Nothing

Shape : Arc screen

Use:Waste water treatment and fish breeding and poultry raising





中排/进水装置

Header and Hub Laterals & Hub Radial Laterals

我公司生产的不锈钢中排装置有多种形式，有十字型、鱼刺型，直管型，广泛应用于电厂，石油，化工，医药，食品，污水处理，自来水厂等行业的水处理设备领域，是水处理设备补水及水装置中的关键部件，在机械过滤器中应用尤其广泛。

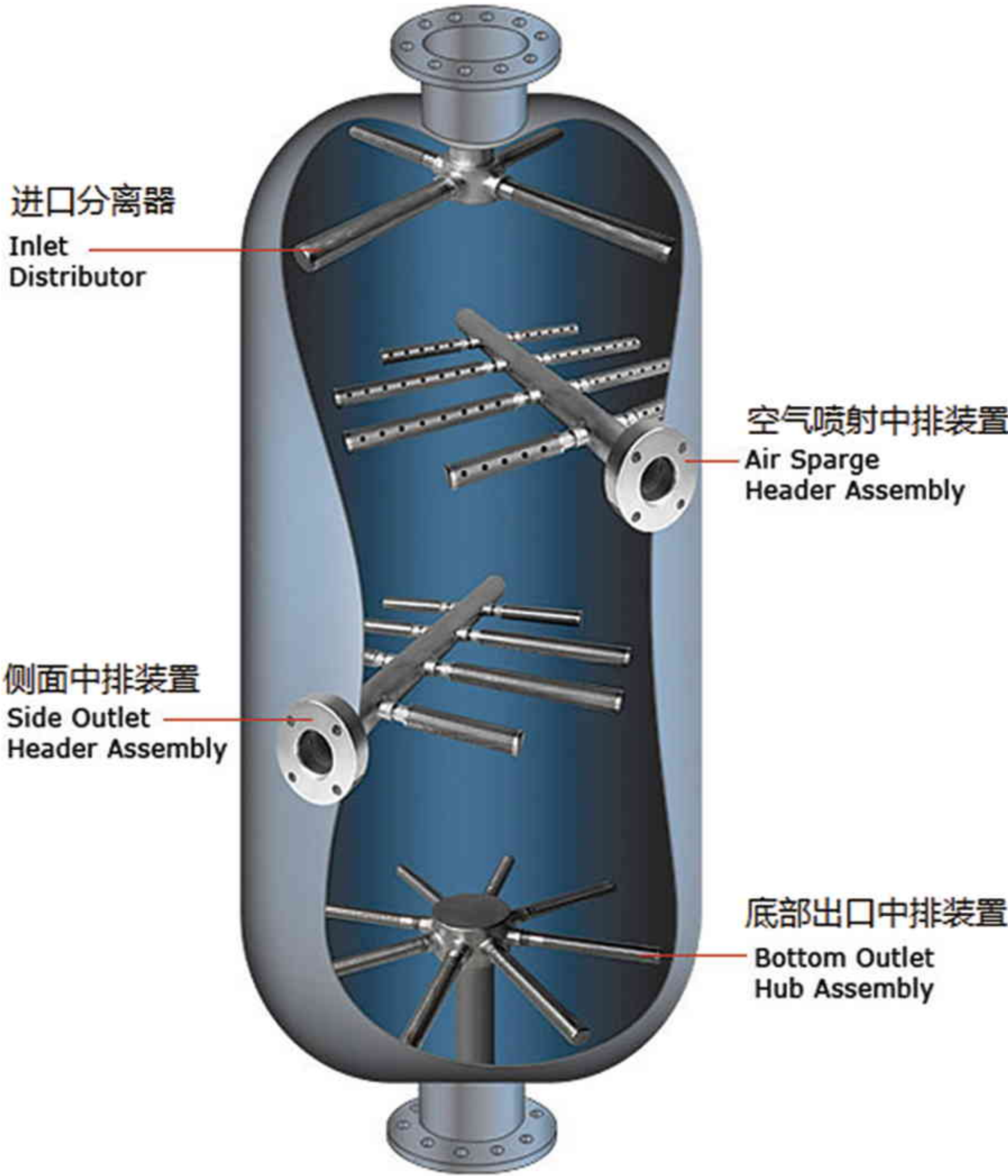
材质：304SS，316LSS，321SS，哈氏合金 B、C等。

规格：都是按照客户的需求进行设计定做的。

Header laterals design is also available for flat bottom vessel distributor or collector application

Header laterals design is also available for flat bottom vessel distributor or collector application. System can be designed to accommodate side, center, top or bottom inset piping. Integral backwash systems can be designed for any hub and header lateral for fast effective and efficient cleaning. Connections of the laterals can be flanged or threaded. All systems are designed for effective liquid or solid retention in a wide range of applications including exchangers, clay and filtration applications, carbon towers and power plants with water systems.

编号 NO.	型号 Size	直径 Diameter (mm)	分支管的外径(毫米) Branch pipe OD (mm)	分支管的数量 Branch pipe quantity (PCS)	主干管的直径 Main pipe diameter
1	HL-125	1250	25-57	6-8	DN80
2	HL-160	1600	28-57	6-8	DN80
3	HL-180	1800	32-65	8-12	DN80-DN100
4	HL-200	2000	42-89	8-12	DN80-DN125
5	HL-220	2200	42-89	8-12	DN100-DN125
6	HL-250	2500	57-89	8-16	DN100-DN125
7	HL-280	2800	57-89	8-20	DN100-DN150
8	HL-300	3000	57-89	8-20	DN125-DN200
9	HL-320	3200	57-89	8-22	DN125-DN250





深井防砂筛管/带中心管筛管

Pipe base screen

- 筛管有单层筛管、双层筛管、内装中管（基管）等各种结构形成。
- 接头可制成平形接头、普通螺纹接头、锥度牙接头及梯形牙接头。
- 筛管的长度可达6000mm。
- 主要用于油井、气井、水井防砂、泥浆过滤。
- Well screen contain single-deck well screen,double-deck well screen,pipe base well screen etc.
- End connection:welded rings,threaded couplings
- The length upto 6000mm
- Used in oil well,gas well,water well sand control,slurry filter

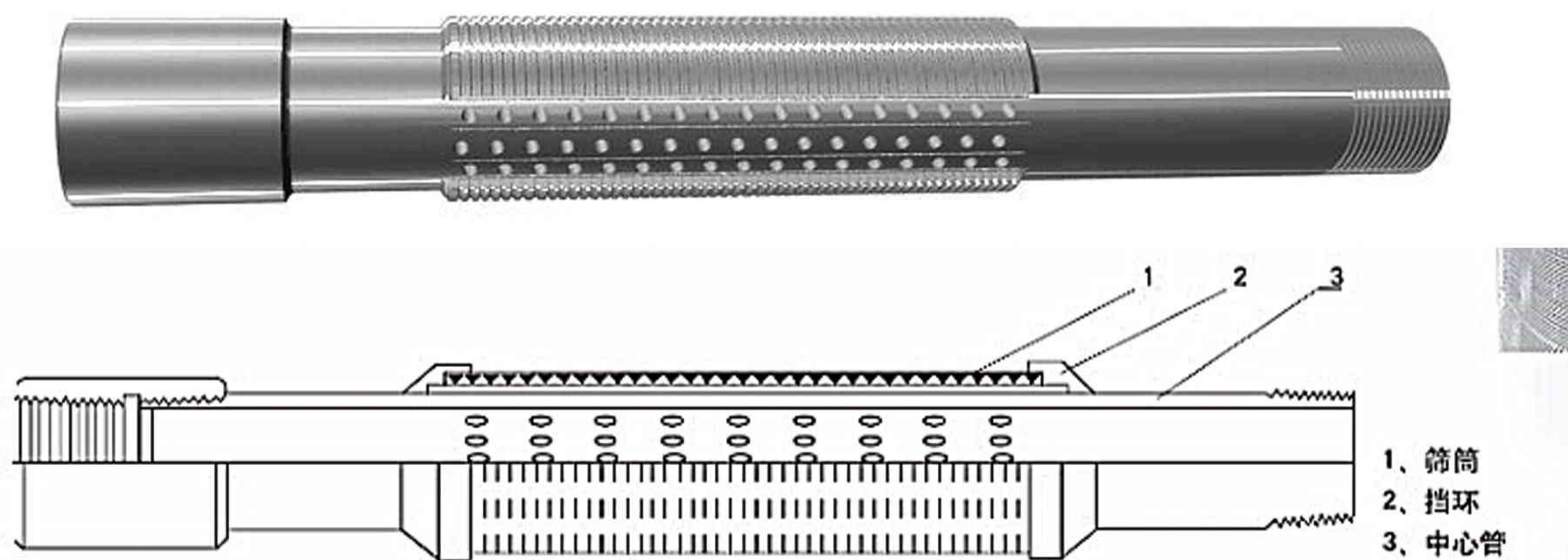


产品描述

由基管、全焊式绕丝筛管和支撑环组成。基管采用符合API标准的套管或油管钻孔而成，全焊式绕丝筛管通过支撑环与基管焊接为一体。

性能特点

- 1、更高的过滤精度：由于基管为全焊式绕丝筛管，采用VEE型大开口设计，使过滤精度面积更为精密，更好的起到了防砂的作用。
- 2、极佳的整体强度和抗变形能力：内部由基管支撑，外部根据需要可增加外保护套加强保护，钻孔基管的整体强度比标准的套管/油管仅下降2~3%，具有足够的整体强度抵抗地层的挤压变形。即使局部变形时，受压部位的缝隙也不增大，防砂可靠性高。
- 3、更多的选择：外层筛管材质可为不锈钢或低碳钢，可根据用户实际需求自行选择材质。
- 4、高密度缝隙、低流动阻力缝隙密度是普通割缝筛管的3~5倍，流动阻力低，有利于提高油气产量。
- 5、良好的工艺性，实现了高效率、低成本、大规模生产。



注：

- 1.我厂生产的筛管各项技术标准按中华人民共和国石油天然气行业标准SY-T5182-2008执行
- 2.特殊规格根据用户要求生产。



编织网/轧花网/不锈网/Crimped wire mesh/Stainless steel wire mesh

材质：不锈钢丝、铁丝、黑钢丝等，也可以根据客户的要求订做。

编织及特点：平织、斜织、竹花编织、密纹编织而成。

特点：具有耐酸、耐碱、耐高温、耐磨等性能。

用途：用于矿业、石油、化工、食品、医药、机械制造等行业。

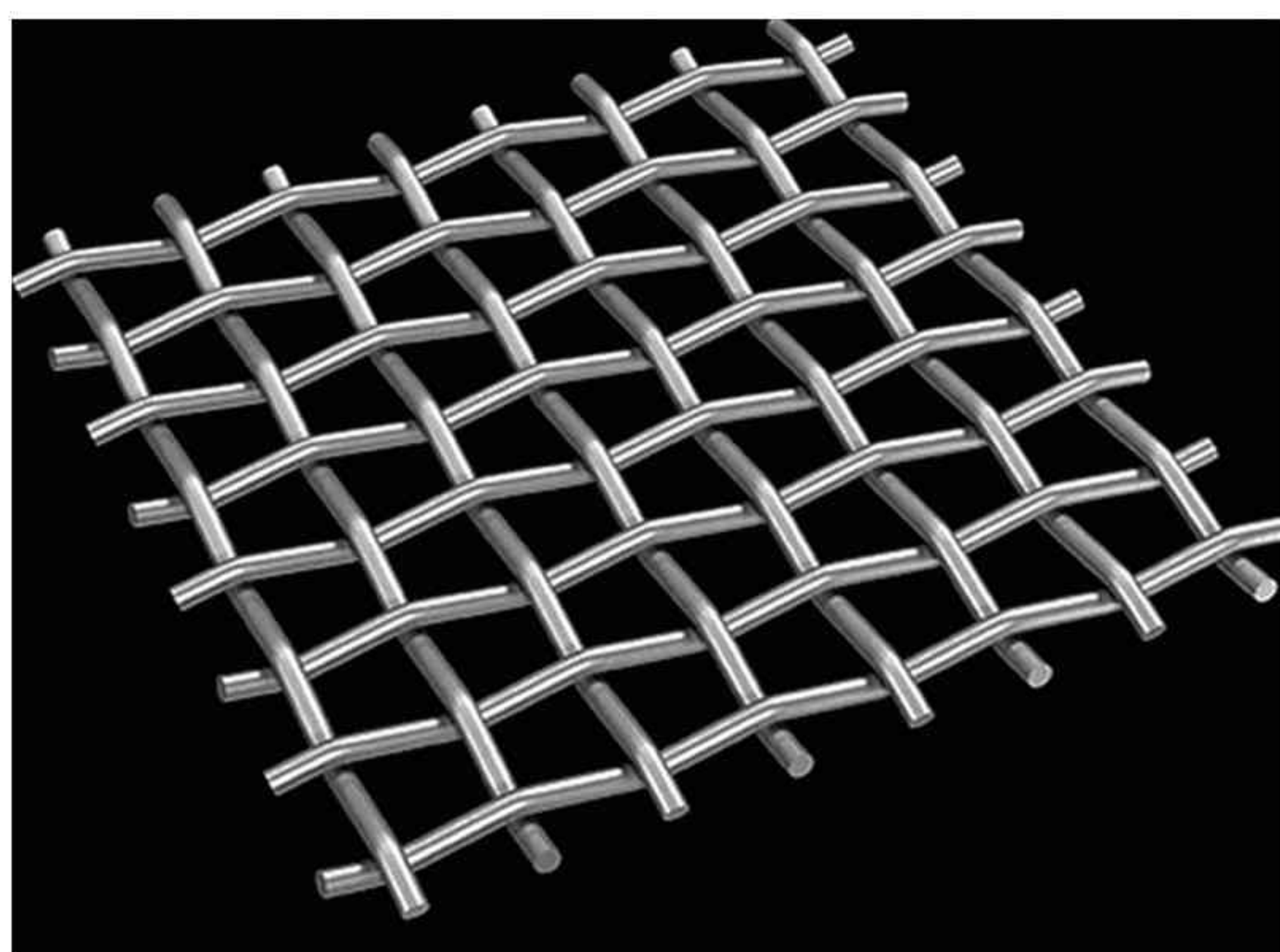
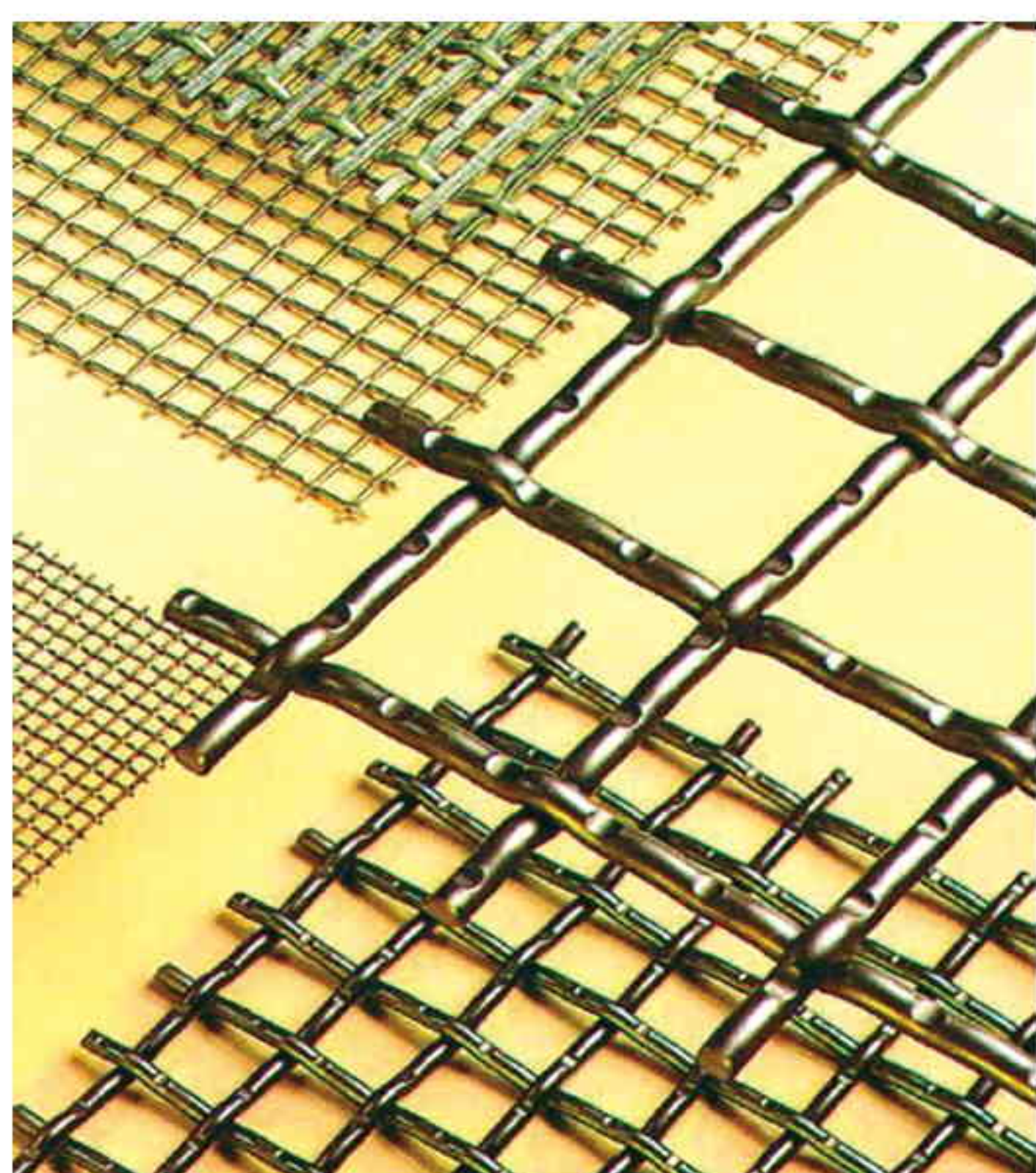
Crimped wire mesh/Stainless steel wire mesh

Material:stainless steel wire,iron wire,black steel wire etc.Also can be made according to the customers' requirement.

Weaving:Plain weaving, twill weaving,Crimped before weave,double-direction separate,ripples flections,tight lock flections, flattop flections,double-direction flections etc.

Characteristics:The structure is hard,acid-proof,bear alkali,hot-resistant,bear to whet etc.

Usage:Used for screen in mine,coal factory,industry,architecture,filtera and grain,filter the liquid and air,also can be used in the security in machiney fittings.



冲孔网/Perforated wire mesh

孔径：0.5-50mm，可订做

板厚：0.5-20mm，可订做

材质：不锈网，镀锌板，铝板，铝合金，铜板，铁板，碳钢等

表面处理：镀锌（冷镀，热镀）、PVC包塑，粉末涂层，抛光等

孔的形状：圆形，长方形，正方形，三角形，菱形，六边形，十字形。可订做

工艺：冲压

颜色：金色，白色，黑色，银色，灰色，紫色，蓝色等

Hole Diameter/Aperture：0.5mm-50mm,or be customized

Thickness：0.5mm-20mm,or be customized

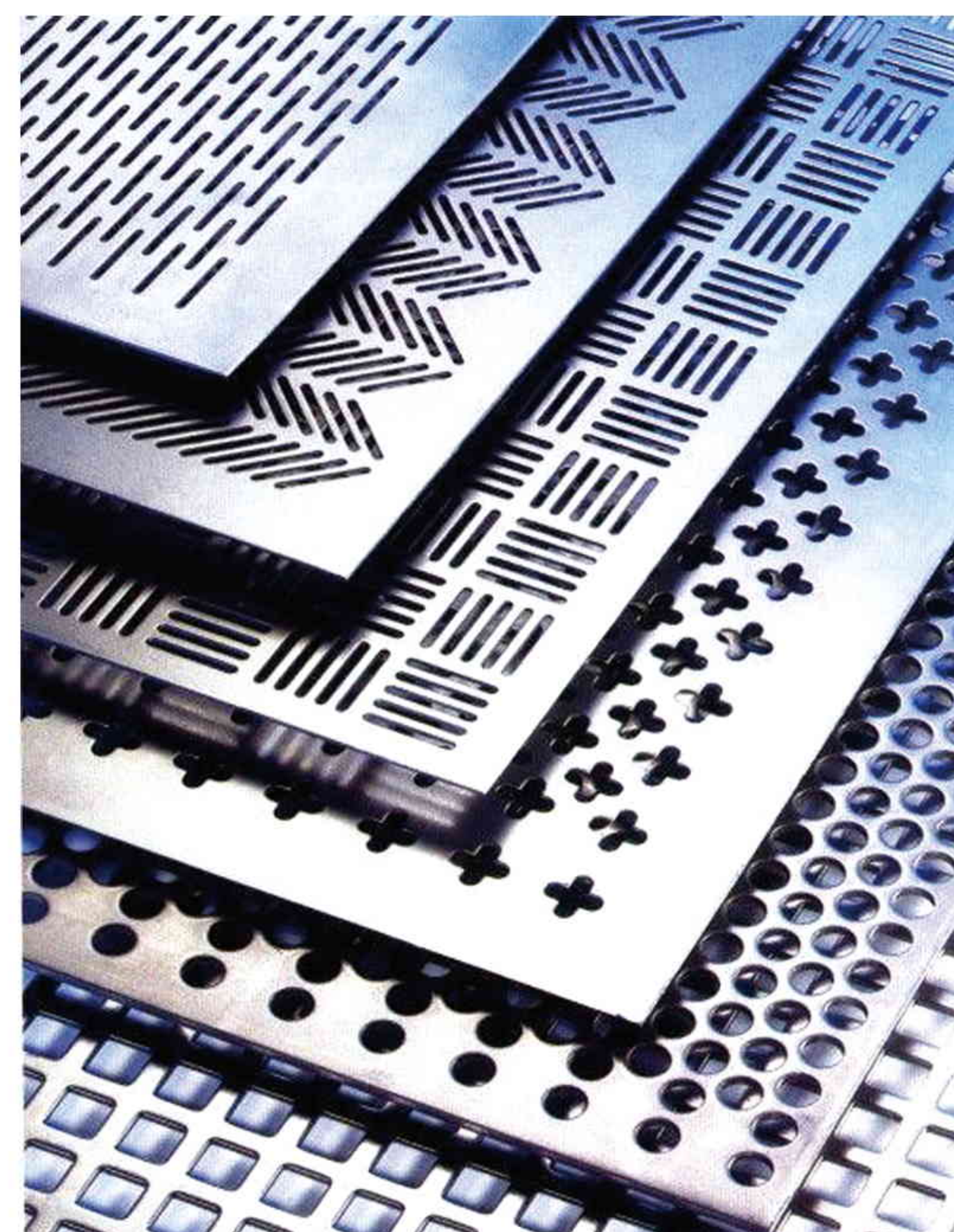
Material：Stainless steel, galvanized metal, aluminum, aluminum alloy,copper, iron, carbon steel, etc.

Surface treatment:Galvanized(electro galvanized,hot dipped galvanized), PVC coated,powder coated,polished etc

Hole shape:Round,rectangular,square,triangle,diamond,hexagonal, Cross,slotted,or be customized

Technique:Perforated

Color:Golden,white,black,silver,gray,purple,blue etc.





其它 /Others



反卷筛筒/Reverse screen tube



离心机筛蓝/Sieve basket



圆筛管/Circular screen pipe



反绕筛管/Anti round screen pipe



锥形筛管/Taper screen pipe



树脂捕捉器/Resin trap

产品规格可以根据用户要求加工定做

All product specifications can be made according to customer requirements



安平县恒源五金网业制品有限公司

地址：安平县兴安大道南侧(徐疃村北)

电话：0318-7565918

手机：13903185920 15933559236 18632892101 15731138018

电子邮箱：hengyuan1@aphywire.com hengyuan2@aphywire.com

hengyuan3@aphywire.com hengyuan4@aphywire.com

hengyuan5@aphywire.com hengyuan66@aphywire.com liu@aphywire.com

网 址：<http://www.johnsonwirescreen.com>

<http://www.waterwirescreen.com>

<http://www.wirewrapscreen.com>

Anping County Hengyuan Hardware Netting Industry Product Co.,Ltd.

Address: South of xing'an road (North of xutuan village) Anping

County,Hengshui City,053600,Hebei Province,China

Tel:+86-318-7565918

Fax:+86-318-7565919

WhatsApp / Wechat / Phone:+86-13903185920 +86-15933559236 +86-18632892101 +86-15731138018

Email: hengyuan1@aphywire.com hengyuan2@aphywire.com

hengyuan3@aphywire.com hengyuan4@aphywire.com

hengyuan5@aphywire.com hengyuan66@aphywire.com liu@aphywire.com

Website: <http://www.johnsonwirescreen.com>

<http://www.waterwirescreen.com>

<http://www.wirewrapscreen.com>